

---

# WICANDERS

Everyday comfort.  
Lifetime performance.

AMORIM CORK FLOORING



Created by Humans,  
Inspired by Nature







# WICANDERS

Wicanders has a legacy that goes back to 1868. It is part of Amorim Cork Flooring, the global leading brand in cork-based flooring, present in more than 80 countries worldwide. Its promise is to provide Floors for Living, ready for real life, for our home and office, for our different rhythms, for our family and pets. For all those wonderful and simple, yet sometimes unexpected moments, thanks to Wicanders durability and **performance**.

Over the years, Wicanders has developed sustainable flooring with exclusive properties due to its cork benefits. By combining state of the art technology with the exclusive natural properties of cork, a higher standard of **comfort** in flooring is achieved. Available with cork, wood and stone looks, its products are able to provide a silent and thermally insulated environment that endures impacts and is very comfortable to walk and stand on.

**Wicanders means  
everyday comfort, lifetime performance.**

---

AMORIM CORK FLOORING



An aerial photograph of a serene landscape. On the left, a calm body of water reflects the sky. To the right, a grassy bank slopes down towards the water, dotted with several mature trees. The trees cast long, dark shadows across the dry, yellowish-green grass. In the distance, more trees and a small cluster of buildings are visible on the far bank. The overall scene is peaceful and natural.

# CORK: Inspired by Nature

Inspired by Nature, Wicanders represents a unique balance between the creation of innovative products and the protection of the environment.

One of cork's most extraordinary properties can be found in its biological origins. In fact, extracting cork does not harm the tree from which it comes from. It is removed every nine years, and not a single tree is cut down in the process.

Cork is the outer bark of the cork oak tree (*Quercus suber* L.), a slowly growing tree from the Mediterranean with a lifespan of around 200 years and plays a central role in the environmental, economic and social development of this region.

With unique properties, cork is 100% natural and fully biodegradable, renewable and recyclable.





**200 YEARS**

The average lifespan of a cork oak tree.

**100.000**

Direct and indirect jobs are created by the cork industry.

**9 YEARS**

The period of time between each cork oak harvesting.

**NO TREES ARE DAMAGED**

Or cut down.

**CORK HARVESTING**

Is one of the highest paid agricultural job in the world.

## Sustainable by heart

### ENVIRONMENT



#### No Trees are damaged or cut down during the harvesting

The extraction of cork and its related industries are remarkably sustainable. This is because the tree is never cut down or damaged during the extraction process and the bark regenerates itself after each harvesting.



#### Positive ecological impact

For each ton of cork produced, the cork oak forest retains up to 73 tons of CO<sub>2</sub>, helping to reduce Global Warming Potential (GWP).

### ECONOMY



#### Rural areas economic engine

The cork oak forest is essential for the economic development of rural areas in the Mediterranean region, by creating jobs and activities related to the harvesting and treatment of cork. WWF estimates that more than 100,000 people are economically dependent of cork-related business activities.



#### One of the highest paid agricultural jobs

Cork harvesting is an activity that requires experience and high skills, to prevent damaging the tree during the process. Therefore this activity is one of the highest paid agricultural job in the world.

### SOCIAL



#### Crossing generations

More than a job, harvesting is a handcraft work that requires a deep knowledge of the forest and the technique. Thus to be able to perform this activity takes several years of training, a know-how that crosses family generations.



#### Prevent rural desertification

Cork harvesting is a regular and cyclical process, creating a continuous activity that contributes to settle people in areas at risk of desertification.

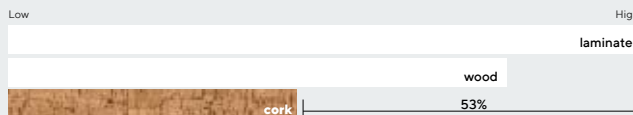


# From Nature, to your special space.

Our products are designed to resist under the toughest conditions, always with incredible stability and exceptional **performance**.

Cork offers a world of **comfort** to be discovered by your feet.

## WALKING SOUND



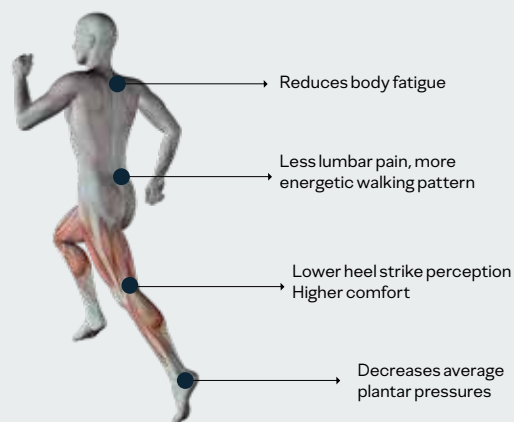
## Silence

Reduces the walking sound up to 53%.



## Impact Resistance

Highest shock absorbing performance.



## Walking Comfort

Wicanders cork floors are the perfect mix to reduce heel strike impacts and related body tensions, but stable enough to help the foot impulse and provide the needed stability to reduce effort on walking and decrease body fatigue.







## Indoor Air Quality

Compliance with the strictest indoor air quality standards after being **tested on over 2000 potential chemicals.**

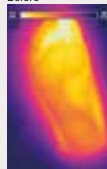


## Natural Thermal Insulation

Optimal floor temperature all year round.

### INFRARED FOOT TEMPERATURE

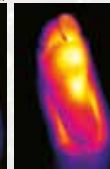
Before



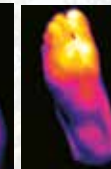
After contact for 2 min



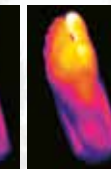
cork



wood



vinyl



ceramics

■ COLD  
■ HOT

## **cork**

Go	10
Essence	16

## **wood**

Go	28
Resist	38
Infinitus	44
Resist ECO	48
Essence	56
Hydrocork	64

## **stone**

Essence	77
---------	----





**cork**  
A world of solutions  
at your feet.



# cork Go

Formats 905 x 295 x 10,5mm  
35 5/8 x 11 5/8 x 3/8"



Developed to be an easy and practical floor with the unique beauty of timeless cork designs that gives a seamless look to the floor. A sustainable product that is ideal for residential use. Cork Go takes advantage of the thermal and accoustical benefits of cork while providing ease of maintenance and outstanding comfort when walking barefoot.



Dream





GB05003  
**Dream**  
80001642  
905 x 295 x 10,5mm



MF01003  
**Earth Tones Grit**  
80002131  
905 x 295 x 10,5mm



GB09002  
**Impulse**  
80001645  
905 x 295 x 10,5mm



C87Y001  
**Serenity**  
80001286  
905 x 295 x 10,5mm



MF02002  
**Earth Tones Sand**  
80002133  
905 x 295 x 10,5mm



C87V001  
**Affection**  
80001283  
905 x 295 x 10,5mm



GB01003  
**Charm**  
80001636  
905 x 295 x 10,5mm



GB10002  
**Appeal**  
80001646  
905 x 295 x 10,5mm





MF03003

Earth Tones Mud

80002135

905 x 295 x 10,5mm



C87X001

Gloomy

80001285

905 x 295 x 10,5mm



C87W001

Addict

80001284

905 x 295 x 10,5mm



GB06002

Ambition

80001643

905 x 295 x 10,5mm



GA01002

Moment

80001631

905 x 295 x 10,5mm



GA21003

Desire

80001633

905 x 295 x 10,5mm

# Dance, laugh, play freely!

When it comes to choosing the ideal flooring for a home, there is no better option than cork floors. Perfect for those who seek comfort while walking barefoot, playing freely. The sound reduction helps to keep your home quiet and calm. Chose the most suitable and beautiful look for your home.





C824001

Captivation

80001219

905 x 295 x 10,5mm



C8D2001

Blase

80001298

905 x 295 x 10,5mm

Desire





C822001

Whim

80001218

905 x 295 x 10,5mm



GB03002

Attraction

80001640

905 x 295 x 10,5mm



MF05003

Earth Tones Argil \*

80002139

905 x 295 x 10,5mm



GB02002

Allure

80001638

905 x 295 x 10,5mm



MF06002

Earth Tones Soil

80002141

905 x 295 x 10,5mm



MF04003

Earth Tones Concrete

80002137

905 x 295 x 10,5mm



Earth Tones Argil



# Technical solution

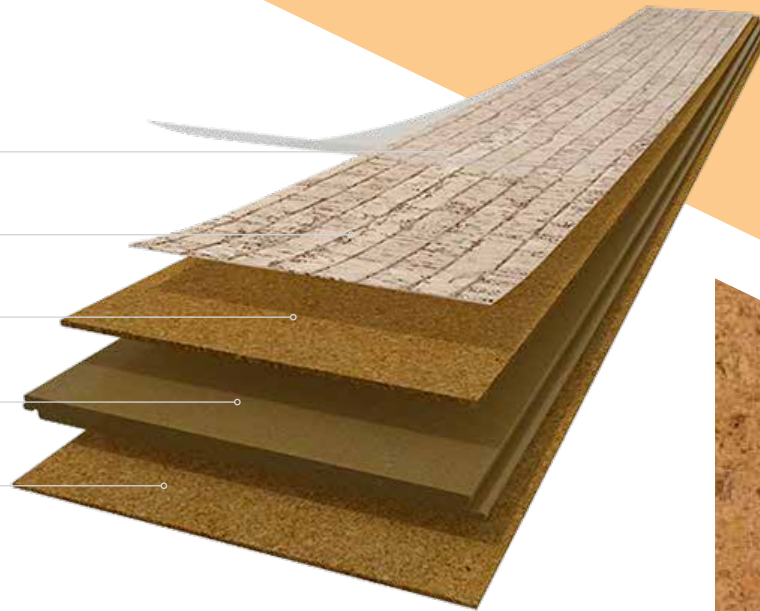
PROTECTIVE SURFACE

GENUINE CORK VENEER

AGGLOMERATED CORK 2,6MM

HDF – HIGH DENSITY FIBERBOARD WITH CORKLOC

INTEGRATED CORK UNDERLAY 0,8MM



## Finishing & Warranty



XtraMatt surface has a unique natural look and feel, combined with the resistance and performance of a UV finish, focused on environmental friendly properties and ease of maintenance.



Greenguard certification identifies products that have low chemical emissions, improving the indoor air quality. The GOLD certification ensures that a product is acceptable for use in environments such as schools and healthcare facilities.



TÜV-PROFICERT is a transnational certificate for VOC-emissions and air quality, certifying that a product complies with different national regulations, such as AgBB, Belgian VOC regulation, Finnish M1 classification, BREEAM Exemplary Level, LEED v4 (outside North America), RAL-UZ 120 and Austrian Eco Label (Guideline UZ 56).



As of January 2012, France has adopted regulations that limit total VOC emissions of building products. Manufacturers, selling their products in France must obtain a classification ranging from A+ (very low emissions) to C (high emissions). The declared goal is to improve indoor air quality in private/ commercial buildings.



The goal of the German Cork Association is to assure the quality of cork products, as well as the optimization of manufacturing processes and the support of research projects.



CE marking is a certification mark that indicates conformity with health, safety and environmental protection standards for products sold within the European Economic Area (EEA).



7 POINTS



8 POINTS



# cork Essence

Formats 905 x 295 x 10,5mm  
35 5/8 x 11 5/8 x 3/8"  
1220 x 185 x 10,5mm  
48 1/32 x 7 9/32 x 13/32"



Rich in style, charm and sophistication, cork Essence expresses its personality through the unique designs and formats aligned with modern interior design trends. In harmony with nature, each board is unique. The ideal floor for creating ambiances full of charm, combined with the unique comfort of cork and the performance requirements of residential and light commercial applications.



Fashionable Glacier





C85J001

Fashionable Glacier

80001244

905 x 295 x 10,5mm



I801002

Identity Moonlight

80001650

905 x 295 x 10,5mm



P801002

Personality Moonlight

80002260

905 x 295 x 10,5mm



C83R002

Lane Timide \*

80001224

1220 x 185 x 10,5mm



P802002

Personality Timide

80002262

905 x 295 x 10,5mm



C88N001

Fashionable Jasmim \*

80001289

905 x 295 x 10,5mm



4 sides beveled

\* minimum order quantity: 250 m<sup>2</sup>



**cork** Essence



C810003

Linn Blush

80001212

905 x 295 x 10,5mm



C81N002

Linn Moon

80001211

905 x 295 x 10,5mm



Fashionable Antique White



# When Nature meets charm

In modern interior design, the creation of spaces with style and personality starts with beautiful and expressive floors. Aligned with the market trends, our team of experts has created a unique collection that combines different shapes of natural Cork.

Rich in style, charm and sophistication, and in harmony with nature, this collection also provides a sense of wellbeing that will make more pleasant getting together with friends and family.



I803002

Identity Silver

80001652

905 x 295 x 10,5mm



C88K001

Fashionable Antique White \*

80001288

905 x 295 x 10,5mm



I802002

Identity Timide

80001651

905 x 295 x 10,5mm



C85L001

Fashionable Cement

80001246

905 x 295 x 10,5mm



C88Q001

Fashionable Antracite \*

80001292

905 x 295 x 10,5mm



C85M001

Fashionable Grafite

80001247

905 x 295 x 10,5mm

\* minimum order quantity: 250 m<sup>2</sup>





I810002

**Identity Tea**

**80001657**

905 x 295 x 10,5mm



P810002

**Personality Tea**

**80002266**

905 x 295 x 10,5mm



C85N001

**Fashionable Macchiato**

**80001249**

905 x 295 x 10,5mm



C88P001

**Fashionable Marfim \***

**80001291**

905 x 295 x 10,5mm



P805002

**Personality Champagne**

**80002263**

905 x 295 x 10,5mm



I805002

**Identity Champagne**

**80001653**

905 x 295 x 10,5mm



C8G2001

**Novel Edge Natural**

**80001300**

905 x 295 x 10,5mm



O824003

**Originals Shell**

**80002239**

905 x 295 x 10,5mm





Novel Edge Natural



O801007

Originals Natural

80002234

905 x 295 x 10,5mm



C84M001

Traces Tea \*

80001239

1220 x 185 x 10,5mm





C84N001

Traces Spice \*

80001240

1220 x 185 x 10,5mm



O830003

Originals Symphony

80002241

905 x 295 x 10,5mm



O821005

Originals Harmony

80002236

905 x 295 x 10,5mm



O841002

Originals Accent

80002243

905 x 295 x 10,5mm







O849003

Originals Dawn

80002244

905 x 295 x 10,5mm



O822002

Originals Character

80002238

905 x 295 x 10,5mm



O83S003

Lane Chestnut \*

80001227

1220 x 185 x 10,5mm



O85R002

Traces Chestnut \*

80001252

1220 x 185 x 10,5mm





P832002

Personality Chestnut

80002268

905 x 295 x 10,5mm



I832002

Identity Chestnut

80001662

905 x 295 x 10,5mm



I821002

Identity Nightshade \*

80001660

905 x 295 x 10,5mm



Identity Chestnut



# Technical solution

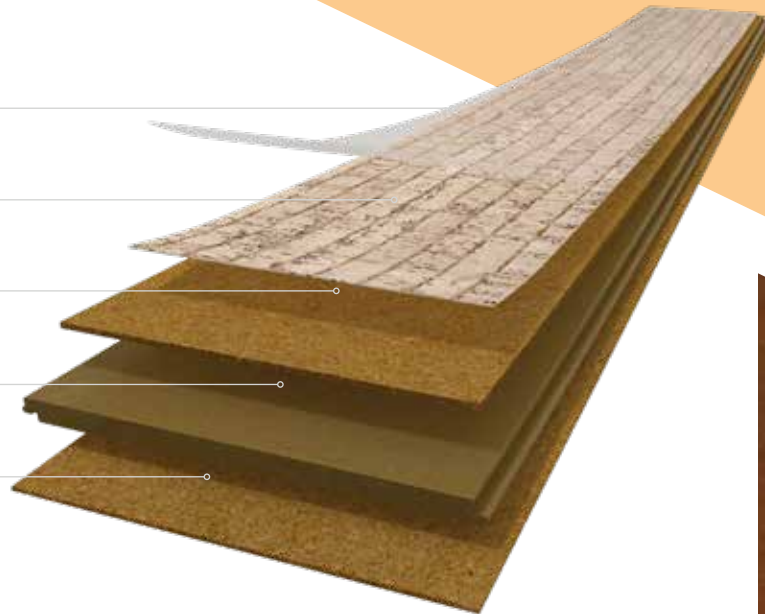
PROTECTIVE SURFACE

GENUINE CORK VENEER

AGGLOMERATED CORK 2,6MM

HDF – HIGH DENSITY FIBERBOARD WITH CORKLOC

INTEGRATED CORK UNDERLAY 0,8MM



## Finishing & Warranty



XtraMatt+ surface is a High Resistance Acrylic UV finish suitable for residential and light commercial areas. It enhances the natural beauty and environmental friendly properties of cork floors, while assuring a high performance for a long time.



Greenguard certification identifies products that have low chemical emissions, improving the indoor air quality. The GOLD certification ensures that a product is acceptable for use in environments such as schools and healthcare facilities.



TÜV-PROFICERT is a transnational certificate for VOC-emissions and air quality, certifying that a product complies with different national regulations, such as AgBB, Belgian VOC regulation, Finnish M1 classification, BREEAM Exemplary Level, LEED v4 (outside North America), RAL-UZ 120 and Austrian Eco Label (Guideline UZ 56).



As of January 2012, France has adopted regulations that limit total VOC emissions of building products. Manufacturers, selling their products in France must obtain a classification ranging from A+ (very low emissions) to C (high emissions). The declared goal is to improve indoor air quality in private / commercial buildings.



The goal of the German Cork Association is to assure the quality of cork products, as well as the optimization of manufacturing processes and the support of research projects.



CE marking is a certification mark that indicates conformity with health, safety and environmental protection standards for products sold within the European Economic Area (EEA).



7 POINTS



8 POINTS

## Technical Data Sheet

Floating			cork Go	cork Essence
Dimension (LxWxT)	-	-	905x295x10,5 mm	905x295x10,5 mm 1220x185x10,5 mm
Mass per unit	-	Kgs / sqm	7,68	7,68
Packaging (box / pallet)	-	sqm	2,136 / 111,072	2,136 / 111,072 - 905x295x10,5 mm 1,806 / 79,464 - 1220x185x10,5 mm
Level of use Domestic	ISO 10874	Class	23	23
Level of use Commercial	ISO 10874	Class	-	31
	Standard-Test Method	Unit	Specification	
<b>General Properties</b>			<b>EN 12104 - EN 20326</b>	
Thickness, t -	EN ISO 24346	± 0,25	Complies	Complies
Length, l	EN ISO 24342	+/- 0.5%	Complies	Complies
Width, w	EN ISO 24342	+/- 0.10%	Complies	Complies
Squareness, q	EN ISO 24342	< 0.2	Complies	Complies
Straightness, s	EN ISO 24342	≤ 0,30	Complies	Complies
Openings, o	ISO 24337	max ≤ 0,20 mm	Complies	Complies
Height difference, h	ISO 24337	hmax ≤ 0,15 mm	Complies	Complies
Flatness of the panel (Length - concave / convex)	ISO 24337	concave ≤ 0,50 %, / convex ≤ 1,0 %	Complies	Complies
Flatness of the panel (Width - concave / convex)	ISO 24337	concave ≤ 0,15 %, / convex ≤ 0,20 %	Complies	Complies
Dimensional Stability	ISO 20326 (Anex C)	≤ 0.25 %	Complies	Complies
<b>Classification Properties</b>			<b>EN 12104 - EN 20326</b>	
Wear resistance IP	EN 14354 (Annex D)	≥ 1000 cycles	Complies	Complies
Castor chair resistance	ISO 4918	25 000 cycles	Complies	Complies
Simulated movement of a furniture leg	Visual	No damage shall be visible after testing with a foot type 2	Complies	Complies
Residual Indentation	EN ISO 24343-1	≤ 0,4 mm	Complies	Complies
Swelling	ISO 24336	≤ 20%	Complies	Complies
<b>Safety Properties</b>			<b>EN 14041</b>	
Fire resistance	EN ISO 11925-2 + EN ISO 9239-1: Class EN 13501-1	Class	Dfl-s1	C fl-s1
Slip Classification	EN 13893	Class	DS	DS
Formaldehyde emission	EN 717-1	Class	E1	E1
Content pentachlorophenol (PCP)	EN 14041 Annex B	mg/kg	Undetectable	Undetectable
<b>Additional properties</b>				
Impact sound reduction	EN ISO 10140	dB (Δ Lw)	16	16
Walking noise	IHD-W431	dB %	3,2 51,6	13,2 51,6
Thermal resistance (Thermal conductivity)	EN ISO 10456	m2 K/W	R ≤ 0,150	R ≤ 0,150





**wood**

Be different.

Stay in your comfort zone.

Floating floor with classic wood visuals and a multilayer cork structure for added performance in terms of thermal and acoustic insulation.

This practical solution is ideal for those who like the beauty of wood combined with an easy to maintain and scratch resistant surface.



Washed Moon Oak





BOVM001

Washed Moon Oak

80000582

1220 x 185 x 10,5mm



LJN2001

Ivory Salt Oak

80001950

1220 x 185 x 10,5mm



BON9001

Frozen Oak

80000521

1220 x 185 x 10,5mm



LJW3001

Quartz Larch

80002092

1220 x 185 x 10,5mm



LJUX001

Oak Light Gris

80002055

1220 x 185 x 10,5mm



LJVZ001

Oak Modern Gris

80002090

1220 x 185 x 10,5mm

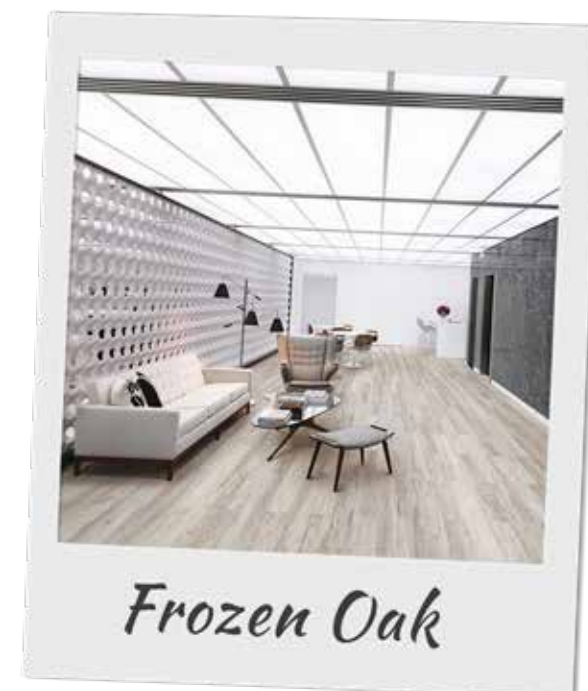


LJN3001

Storm Oak

80001953

1220 x 185 x 10,5mm



wood Go



BOVI001

Pastel Oak

80000579

1220 x 185 x 10,5mm



BOVB001

Argent Oak

80000577

1220 x 185 x 10,5mm



*Washed Tundra Oak*

Argent Oak





BOVP001

Washed Desert Oak

80000583

1220 x 185 x 10,5mm



BOVK001

Washed Tundra Oak

80000581

1220 x 185 x 10,5mm



LJR9004

Polar Nature Oak

80002012

1220 x 185 x 10,5mm



LJWB001

Limed White Rustic Oak

80002098

1220 x 185 x 10,5mm



LJW6001

Old Larch

80002094

1220 x 185 x 10,5mm



LJUY001

Oak Light Nature

80002057

1220 x 185 x 10,5mm



LJUZ001

Oak Nature

80002059

1220 x 185 x 10,5mm



LJWA001

Oil Taupe Oak

80002097

1220 x 185 x 10,5mm



LJN4001

Hard Oak

80001957

1220 x 185 x 10,5mm



LJS0005

Fall Pine

80002020

1220 x 185 x 10,5mm



LJS1004

Highland Pine

80002028

1220 x 185 x 10,5mm



LJS2004

Classic Cherry \*

80002034

1220 x 185 x 10,5mm







Oil Taupe Oak



LJN6001

Savan Limed Oak

80001961

1220 x 185 x 10,5mm



B0VC001

Linen Oak

80000578

1220 x 185 x 10,5mm



B0Q0003

Alaska Oak

80000537

1220 x 185 x 10,5mm



LJN5001

Limed Oak

80001959

1220 x 185 x 10,5mm



LJY6001

Oak Rustic

80002109

1220 x 185 x 10,5mm



LJW5001

Natural Larch

80002093

1220 x 185 x 10,5mm



Chalk Oak





B0WX001

Caribbean Oak

80000592

1220 x 185 x 10,5mm



B0VJ001

Almond Oak

80000580

1220 x 185 x 10,5mm



B0Q1003

Chalk Oak

80000538

1220 x 185 x 10,5mm



LJS5005

Indian Dark Oak

80002045

1220 x 185 x 10,5mm



LJN1001

Honey Oak  
80001949  
1220 x 185 x 10,5mm



LJS3005

Classic Nature Oak  
80002037  
1220 x 185 x 10,5mm



LJWC001

Rustic Taupe Oak  
80002100  
1220 x 185 x 10,5mm



LJS4005

Shield Oak \*  
80002040  
1220 x 185 x 10,5mm



B009001

Light Sucupira  
80000526  
1220 x 185 x 10,5mm



# Technical solution

PROTECTIVE WEAR LAYER

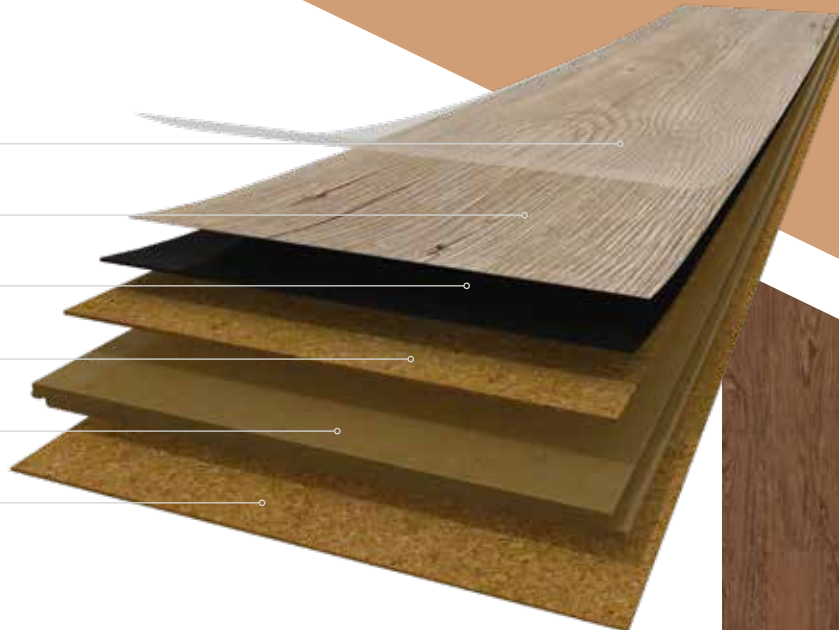
HIGH RESOLUTION DECORATIVE

SOLID VINYL LAYER

AGGLOMERATED CORK 1,5MM

HDF – HIGH DENSITY FIBERBOARD WITH CORKLOC

INTEGRATED CORK UNDERLAY 1,2MM



# Finishing & Warranty



Suitable for heavy traffic residential areas and moderate traffic commercial areas.



Greenguard certification identifies products that have low chemical emissions, improving the indoor air quality. The GOLD certification ensures that a product is acceptable for use in environments such as schools and healthcare facilities.



TÜV-PROFICERT is a transnational certificate for VOC-emissions and air quality, certifying that a product complies with different national regulations, such as AgBB, Belgian VOC regulation, Finnish M1 classification, BREEAM Exemplary Level, LEED v4 (outside North America), RAL-UZ 120 and Austrian Eco Label (Guideline UZ 56).



As of January 2012, France has adopted regulations that limit total VOC emissions of building products. Manufacturers, selling their products in France must obtain a classification ranging from A+ (very low emissions) to C (high emissions). The declared goal is to improve indoor air quality in private/ commercial buildings.



An Environmental Product Declaration is a verified document that reports environmental data of products based on life cycle assessment and other relevant information in accordance with the international standard ISO 14025.



CE marking is a certification mark that indicates conformity with health, safety and environmental protection standards for products sold within the European Economic Area (EEA).



5 POINTS



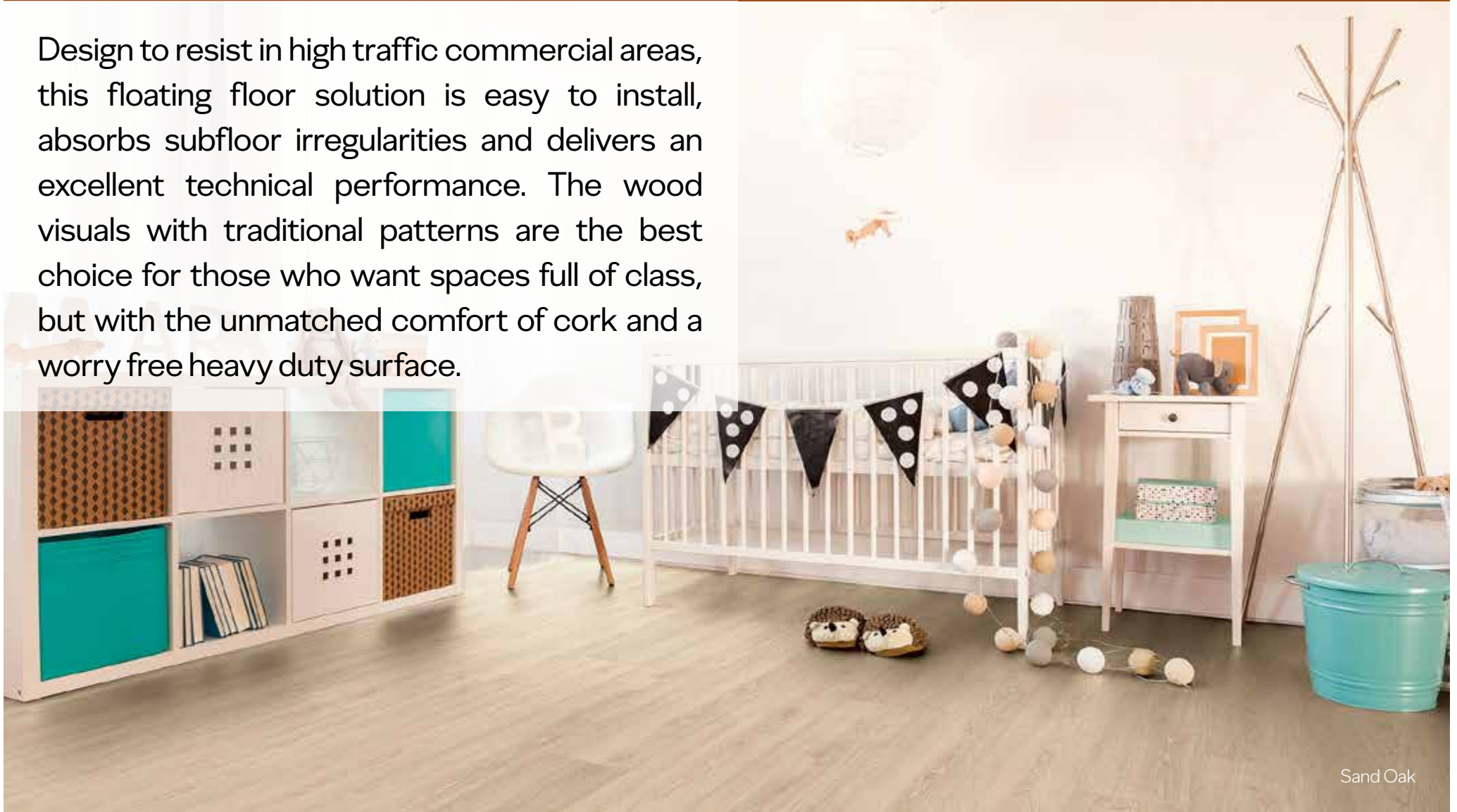
8 POINTS

# wood Resist

Formats 1220 x 185 x 10,5mm  
48 1/32 x 7 9/32 x 13/32"



Design to resist in high traffic commercial areas, this floating floor solution is easy to install, absorbs subfloor irregularities and delivers an excellent technical performance. The wood visuals with traditional patterns are the best choice for those who want spaces full of class, but with the unmatched comfort of cork and a worry free heavy duty surface.







BOR0001  
Linen Cherry  
80000543  
1220 x 185 x 10,5mm



BOR1001  
Sand Oak  
80000544  
1220 x 185 x 10,5mm



BOV4001  
Nordic Ash  
80000571  
1220 x 185 x 10,5mm



BOWR001  
Wheat Oak  
80000590  
1220 x 185 x 10,5mm



Linen Cherry



Sawn Bisque Oak



BOT7001

Limed Grey Oak

80000562

1220 x 185 x 10,5mm



BOP3001

Sawn Bisque Oak

80000530

1220 x 185 x 10,5mm



4 sides beveled





BOR3001

Wheat Pine

80000545

1220 x 185 x 10,5mm



BOWT001

Arcadian Artic Pine \*

80000591

1220 x 185 x 10,5mm

# Creating solutions. Reinventing comfort.

When choosing the perfect tone to complement your special space, Wicanders has all the solutions to match your personal style, while enduring the test of time.

Wicanders products are impact resistant and acoustical and thermal insulators, providing a sense of well-being.



B0U0001

Rustic Limed Gray Oak

80000564

1220 x 185 x 10,5mm



B0P2001

Sawn Twine Oak

80000529

1220 x 185 x 10,5mm



B0P4001

Arcadian Soya Pine

80000531

1220 x 185 x 10,5mm



Limed Grey Oak

\* minimum order quantity: 250 m2



BOT5001

Nature Oak

80000560

1220 x 185 x 10,5mm



BOR4001

Elegant Oak

80000546

1220 x 185 x 10,5mm



BOP5001

Arcadian Rye Pine

80000532

1220 x 185 x 10,5mm



BOP0001

Castle Raffia Oak

80000527

1220 x 185 x 10,5mm

Nature Oak



# Technical solution

PROTECTIVE WEAR LAYER

HIGH RESOLUTION DECORATIVE

SOLID VINYL LAYER

AGGLOMERATED CORK 1,5MM

HDF – HIGH DENSITY FIBERBOARD WITH CORKLOC

INTEGRATED CORK UNDERLAY 1,2MM



# Finishing & Warranty



Suitable for heavy traffic residential areas and heavy traffic commercial areas.



Greenguard certification identifies products that have low chemical emissions, improving the indoor air quality. The GOLD certification ensures that a product is acceptable for use in environments such as schools and healthcare facilities.



TÜV-PROFICERT is a transnational certificate for VOC-emissions and air quality, certifying that a product complies with different national regulations, such as AgBB, Belgian VOC regulation, Finnish M1 classification, BREEAM Exemplary Level, LEED v4 (outside North America), RAL-UZ 120 and Austrian Eco Label (Guideline UZ 56).



As of January 2012, France has adopted regulations that limit total VOC emissions of building products. Manufacturers, selling their products in France must obtain a classification ranging from A+ (very low emissions) to C (high emissions). The declared goal is to improve indoor air quality in private/ commercial buildings.



An Environmental Product Declaration is a verified document that reports environmental data of products based on life cycle assessment and other relevant information in accordance with the international standard ISO 14025.



CE marking is a certification mark that indicates conformity with health, safety and environmental protection standards for products sold within the European Economic Area (EEA).



5 POINTS



8 POINTS

# wood *Infinitus*

Formats 1840 x 220 x 8mm  
72-7/16x8-21/32x5/16"



The ultimate waterproof product that combines Resistance, Performance and Design. Long and wider planks with wood designs, Infinitus will give your space a distinguished and contemporary look. Infinitus is an optimal choice for renovation projects, as it requires minimum subfloor preparation, is also a low thickness product and is suitable for high traffic commercial areas. Performed with 5Gi easy installation system for a flawless floor laying, Infinitus is the perfect fusion of performance and design.



Grey Majestic Oak





B4TE001

Grey Majestic Oak  
80000604  
1840 x 220 x 8mm



B4TI001

Colossal Shadow Oak  
80000608  
1840 x 220 x 8mm



B4TH001

Colossal Light Oak  
80000607  
1840 x 220 x 8mm



B4TF001

Prodigy Bright Oak  
80000605  
1840 x 220 x 8mm



B4TA001

Smooth Solid Oak  
80000600  
1840 x 220 x 8mm



B4TG001

Prodigy Pearl Oak  
80000606  
1840 x 220 x 8mm



B4TB001

Light Majestic Oak  
80000601  
1840 x 220 x 8mm



Natural Majestic Oak



B4TC001

Natural Majestic Oak 4M

80000602

1840 x 220 x 8mm



B4TD001

Brown Majestic Oak 4M

80000603

1840 x 220 x 8mm

4M

4 sides beveled



# Technical solution

PROTECTIVE WEAR LAYER

WOOD HIGH RESOLUTION IMAGE

SPC CORE

INTEGRATED CORK UNDERLAY 1,5MM



## Finishing & Warranty



Suitable for heavy traffic residential areas  
and heavy traffic commercial areas.

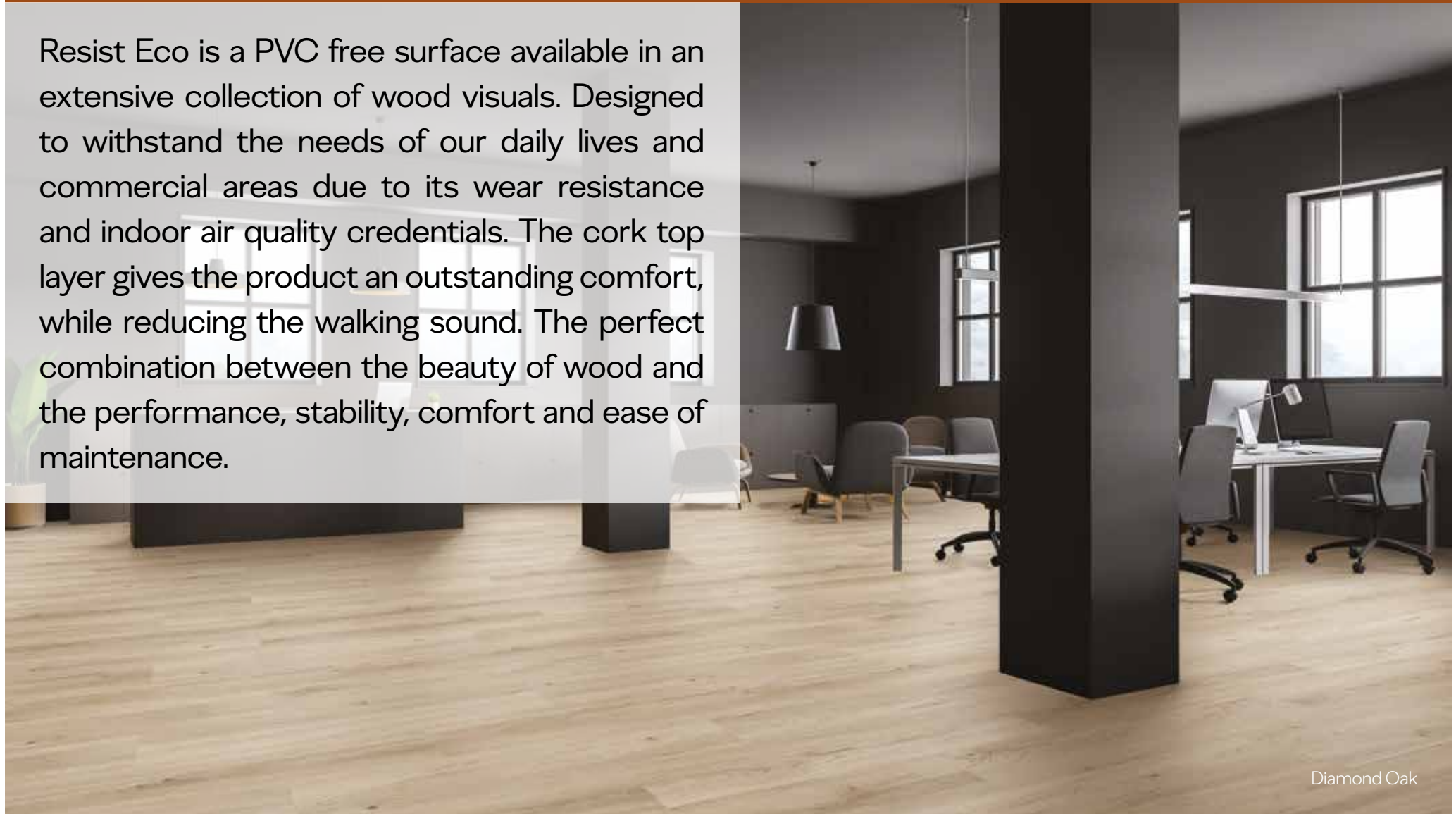


# wood Resist ECO

Formats 1220 x 185 x 10,5mm  
48 x 7 1/4 x 3/8"



Resist Eco is a PVC free surface available in an extensive collection of wood visuals. Designed to withstand the needs of our daily lives and commercial areas due to its wear resistance and indoor air quality credentials. The cork top layer gives the product an outstanding comfort, while reducing the walking sound. The perfect combination between the beauty of wood and the performance, stability, comfort and ease of maintenance.



Diamond Oak





FDYW001

Glacial Pine 4

80001627  
1220 x 185 x 10,5mm



FDYX001

Gold Coast Oak 4

80001628  
1220 x 185 x 10,5mm



FDX5001

Mount Logan Oak 4

80001610  
1220 x 185 x 10,5mm



FDYF001

Ocean Oak 4

80001619  
1220 x 185 x 10,5mm



FDYU001

Castle Mountain Oak 4

80001625  
1220 x 185 x 10,5mm



FDYI001

Diamond Oak 4

80001621  
1220 x 185 x 10,5mm



FDYY001

California Chestnut 4

80001629  
1220 x 185 x 10,5mm





Rain Forest Oak

# There is no place like home.

Flooring is one of the most important decisions when decorating a space. The colour and style you choose for the floor will set the tone for the whole ambiance, reflecting your personality and your style.

These looks will layer up your working space with organic warmth that feels both fresh and real, light and grounded.



FDX7001

**Rain Forest Oak** 4M  
80001612  
1220 x 185 x 10,5mm



FDYD001

**Royal Oak** 4M  
80001617  
1220 x 185 x 10,5mm



4 sides beveled





Royal Oak



FDY7001

Redwood Forest Oak 4M

80001613

1220 x 185 x 10,5mm



FDX6001

Mount Fuji Oak 4M

80001611

1220 x 185 x 10,5mm



Mountain Oak



**NEW**

FDY8001

**Mount Everest Oak**

4

80001614

1220 x 185 x 10,5mm



Sprucewood



FDYA001

**Mountain Oak**

4

80001615

1220 x 185 x 10,5mm

4

4 sides beveled





FDYB001  
**Sprucewood** 4M  
 80001616  
 1220 x 185 x 10,5mm



FDYG001  
**Field Oak** 4M  
 80001620  
 1220 x 185 x 10,5mm



FDYE001  
**Manor Oak** 4M  
 80001618  
 1220 x 185 x 10,5mm



FDYL001  
**Mocca Oak** 4M  
 80001623  
 1220 x 185 x 10,5mm



Manor Oak



FDYM001

Quartz Oak 4M

80001624

1220 x 185 x 10,5mm



FDYV001

Black Forest Oak 4M

80001626

1220 x 185 x 10,5mm



FDYK001

Dark Onyx Oak 4M

80001622

1220 x 185 x 10,5mm

4M

4 sides beveled

Black Forest Oak



# Technical solution

PVC-FREE PROTECTIVE WEAR LAYER

HIGH RESOLUTION DECORATIVE FILM

AGGLOMERATED CORK 1,2MM

HDF – HIGH DENSITY FIBERBOARD WITH CORKLOC

INTEGRATED CORK UNDERLAY 2,2MM



## Finishing & Warranty



Suitable for heavy traffic residential areas  
and heavy traffic commercial areas.



# wood Essence

Formats 1220x185x10,5mm  
48 1/32 x 7 9/32 x 13/32"  
1830 x 185 x 11,5mm  
72 x 7 1/4 x 1 1/2"



Wood Essence offers the beauty of long plank wood looks with a multilayered structure composed by cork that provides a higher standard in terms of stability, performance and walking comfort. The 3,2mm cork top layer will provide an exceptional thermal and acoustic insulation and a natural look and feel.



Washed Arcaine Oak





D8G2001

Washed Haze Oak  
80001501

1830 x 185 x 11,5mm



D8F6001

Prime Arctic Oak  
80001484

1830 x 185 x 11,5mm



D8F5001

Prime Desert Oak  
80001481

1830 x 185 x 11,5mm



D8F5002

Prime Desert Oak  
80001482

1220 x 185 x 10,5mm



D8G1001

Washed Arcaine Oak  
80001498

1830x185 x 11,5mm



D8G1002

Washed Arcaine Oak  
80001499

1220 x 185 x 10,5mm



D8F1001

Dapple Oak  
80001469

1830x185 x 11,5mm





D8G4001

Washed Castle Oak 4M

80001506

1830x185 x 11,5mm



D8G4002

Washed Castle Oak

80001507

1220 x 185 x 10,5mm



D886003

Platinum Chalk Oak 4M

80001446

1830x185 x 11,5mm



D885003

Nebraska Rustic Pine 4M

80001444

1830x185 x 11,5mm







Nebraska Rustic Pine



D8G3001

Washed Highland Oak 4M  
80001503

1830x185 x 11,5mm



D8G3002

Washed Highland Oak  
80001504

1220 x 185 x 10,5mm



D887004

Ivory Chalk Oak 4M  
80001449

1830x185 x 11,5mm





D8H6001

Classic Nordic Pine \*

80001509

1830x185 x 11,5mm



D8F4001

Classic Prime Oak

80001477

1830x185 x 11,5mm



D8F4002

Classic Prime Oak

80001478

1220 x 185 x 10,5mm



D8F7001

Golden Prime Oak

80001487

1830x185 x 11,5mm



Rustic Forest Oak





D8F7002

Golden Prime Oak

80001488

1220 x 185 x 10,5mm



D884004

Prime Rustic Oak



80001441

1830x185 x 11,5mm



D8G0001

Rustic Forest Oak



80001495

1830x185 x 11,5mm



D8F8001

Country Prime Oak



80001490

1830x185 x 11,5mm



D8F9001

Rustic Eloquent Oak



80001492

1830x185 x 11,5mm





Classic Walnut



D8H8001

Classic Sucupira 4M  
80001511  
1830x185 x 11,5mm



D8H7001

Classic Walnut 4M  
80001510  
1830x185 x 11,5mm



D8F3001

Nebula Oak 4M  
80001474  
1830x185 x 11,5mm



D8F2001

Coal Oak 4M  
80001472  
1830x185 x 11,5mm



# Technical solution

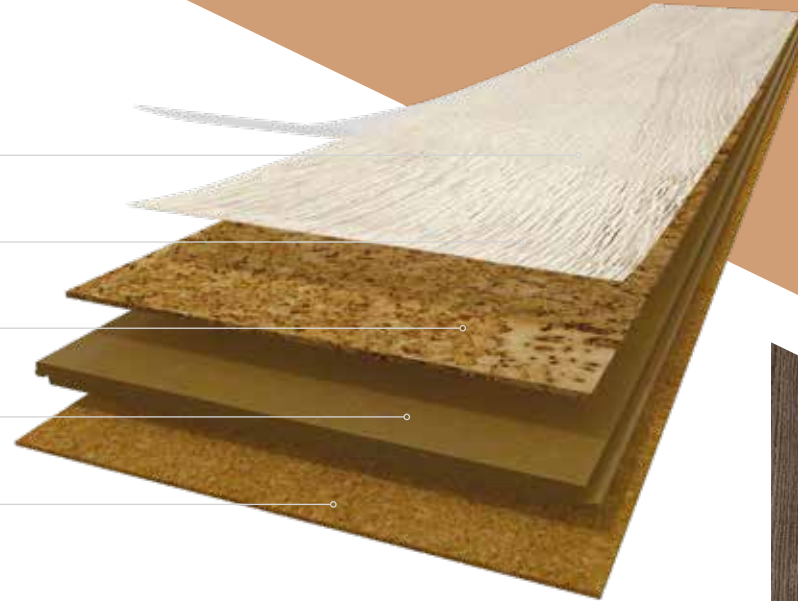
PROTECTIVE SURFACE

HIGH RESOLUTION IMAGE

AGGLOMERATED CORK 3,2MM

HDF – HIGH DENSITY FIBERBOARD WITH CORKLOC

INTEGRATED CORK UNDERLAY 1,2MM



# Finishing & Warranty



NPC surface finish (Natural Power Coat) is the last innovation in varnished cork floors being suitable for the most demanding domestic areas and commercial areas with moderate traffic, achieving a class of 32 (ISO 10874) and AC6 (EN 13329). This green coat also has a very pleasant haptic, which emphasizes the warmth and natural structure of cork.



Greenguard certification identifies products that have low chemical emissions, improving the indoor air quality. The GOLD certification ensures that a product is acceptable for use in environments such as schools and healthcare facilities.



TÜV-PROFICERT is a transnational certificate for VOC-emissions and air quality, certifying that a product complies with different national regulations, such as AgBB, Belgian VOC regulation, Finnish M1 classification, BREEAM Exemplary Level, LEED v4 (outside North America), RAL-UZ 120 and Austrian Eco Label (Guideline UZ 56).



As of January 2012, France has adopted regulations that limit total VOC emissions of building products. Manufacturers, selling their products in France must obtain a classification ranging from A+ (very low emissions) to C (high emissions). The declared goal is to improve indoor air quality in private/ commercial buildings.



An Environmental Product Declaration is a verified document that reports environmental data of products based on life cycle assessment and other relevant information in accordance with the international standard ISO 14025.



The goal of the German Cork Association is to assure the quality of cork products, as well as the optimization of manufacturing processes and the support of research projects.



CE marking is a certification mark that indicates conformity with health, safety and environmental protection standards for products sold within the European Economic Area (EEA).



5 POINTS



8 POINTS

Hydrocork is a low thickness and waterproof floating solution that combines extreme performance with the comfort of cork. The innovative core made of composite cork is waterproof and incredibly stable, while its surface offers a wear resistance suitable for heavy commercial areas.

The product's low thickness makes it also the optimal choice for renovation projects. The revolutionary PressFit compression system allows for a fast and easy installation.



Claw Silver Oak





B5R0002

Linen Cherry 4M  
80000642  
1225x195 x 6mm



B5WR001

Wheat Oak 4M  
80000665  
1225x195 x 6mm



B5V3003

Claw Silver Oak 4M  
80000661  
1225x195 x 6mm

Hydrocork wood visuals will endure the test of time and make any space feel more welcoming.

Whether you choose a traditional or contemporary look, Hydrocork will provide the perfect solution to match your design style.



B5T7002

Limed Grey Oak 4M  
80000656  
1225x195 x 6mm



B5T0002

Light Beech 4M  
80000652  
1225x195 x 6mm



B5R1002

Sand Oak 4M  
80000644  
1225x195 x 6mm



B5R3002

Wheat Pine 4M  
80000646  
1225x195 x 6mm



B5P3002

Sawn Bisque Oak 4M

80000624

1225x195 x 6mm



B5P2002

Sawn Twine Oak 4M

80000622

1225x195 x 6mm



B5WS001

Light Dawn Oak 4M

80000666

1225x195 x 6mm



B5Q0002

Alaska Oak 4M

80000636

1225x195 x 6mm



Alaska Oak





B5P0002

Castle Raffia Oak 4M

80000618

1225x195 x 6mm



B5P4003

Arcadian Soya Pine 4M

80000627

1225x195 x 6mm



Castle Raffia Oak









B5P5003

Arcadian Rye Pine

80000630

1225x195 x 6mm



B5Q1002

Chalk Oak

80000638

1225x195 x 6mm



B5Q2002

European Oak

80000640

1225x195 x 6mm



B5T5002

Nature Oak

80000654

1225x195 x 6mm



B5R4002

Elegant Oak

80000648

1225x195 x 6mm



B5L8001

Sylvan Gold Oak

80000616

1225x195 x 6mm



B5P1002

Castle Toast Oak

80000620

1225x195 x 6mm



4 sides beveled



B5WQ001

Sylvan Brown Oak 4M  
80000664  
1225x195 x 6mm



*Century Fawn Pine*



B5WU001

Rustic Fawn Oak 4M  
80000668  
1225x195 x 6mm



B5P7002

Century Fawn Pine 4M  
80000634  
1225x195 x 6mm







Rustic Fawn Oak



B5WT001

Arcadian Artic Pine

80000667

1225x195 x 6mm



B5R7002

Cinder Oak

80000650

1225x195 x 6mm



Arcadian Artic Pine

**wood** Hydrocork



B5WV001

Rustic Grey Oak 4M

80000669

1225x195 x 6mm



B5P6002

Century Morocco Pine 4M

80000632

1225x195 x 6mm



Century Morocco Pine



# Technical solution

PROTECTIVE WEAR LAYER

HIGH RESOLUTION DECORATIVE

SOLID VINYL LAYER

AGGLOMERATED CORK COMPOSITE CORE WITH PRESSFIT 3MM

BALANCING VINYL LAYER



# Finishing & Warranty



Suitable for heavy traffic residential areas and heavy traffic commercial areas.



\*Please see the terms and conditions of Wicanders Limited Warranty on the website.



Greenguard certification identifies products that have low chemical emissions, improving the indoor air quality. The GOLD certification ensures that a product is acceptable for use in environments such as schools and healthcare facilities.



TÜV-PROFICERT is a transnational certificate for VOC-emissions and air quality, certifying that a product complies with different national regulations, such as AgBB, Belgian VOC regulation, Finnish M1 classification, BREEAM Exemplary Level, LEED v4 (outside North America), RAL-UZ 120 and Austrian Eco Label (Guideline UZ 56).



As of January 2012, France has adopted regulations that limit total VOC emissions of building products. Manufacturers, selling their products in France must obtain a classification ranging from A+ (very low emissions) to C (high emissions). The declared goal is to improve indoor air quality in private/ commercial buildings.



An Environmental Product Declaration is a verified document that reports environmental data of products based on life cycle assessment and other relevant information in accordance with the international standard ISO 14025.



CE marking is a certification mark that indicates conformity with health, safety and environmental protection standards for products sold within the European Economic Area (EEA).



5 POINTS



8 POINTS

# Technical Data Sheet

	Standard	Unit	wood Go	wood <i>Infinitus</i>	wood Resist ECO
Dimension (LxWxT)	-	mm	1220x185x10,5	1840x220x8	1220x185x10,5
Mass per unit	-	Kgs / sqm	9,80	11,6	8,37
Packaging (box / pallet)	-	sqm	1,806 / 79,464	2,429 / 77,728	1,806 / 72,240
Level of use Domestic	ISO 10874	Class	23	23	23
Level of use Commercial	ISO 10874	Class	32	33	33
<b>General Properties - EN 16511</b>					
Thickness, t -	ISO 24337	$\Delta_{avg} \leq 0,50$ mm, relative to nominal value / $t_{max} - t_{min} \leq 0,50$ mm	Complies	Complies	Complies
Length, l	ISO 24337	$\leq 1500$ mm: $\Delta l \leq 0,5$ mm / $> 1500$ mm: $\Delta l \leq 0,3$ mm/m	Complies	Complies	Complies
Width, w	ISO 24337	$\Delta_{avg} \leq 0,10$ mm, relative to nominal value / $w_{max} - w_{min} \leq 0,20$ mm	Complies	Complies	Complies
Squareness, q	ISO 24337	$max \leq 0,20$ mm	Complies	Complies	Complies
Straightness, s	ISO 24337	$max \leq 0,30$ mm/m	Complies	Complies	Complies
Openings, o	ISO 24337	$max \leq 0,20$ mm	Complies	Complies	Complies
Height difference, h	ISO 24337	$h_{max} \leq 0,15$ mm	Complies	Complies	Complies
Flatness of the panel (Length - concave / convex)	ISO 24337	concave $\leq 0,50$ %, / convex $\leq 1,0$ %	Complies	Complies	Complies
Flatness of the panel (Width - concave / convex)	ISO 24337	concave $\leq 0,15$ %, / convex $\leq 0,20$ %	Complies	Complies	Complies
<b>Classification properties - EN 16511</b>					
Wear resistance IP	EN 15468 - annex A EN 15468, procedure B	$\geq 1500$ cycles $\geq 5000$ cycles	Complies -	- Complies	- Complies
Impact resistance [mm] (big ball)	EN 13329:2006+A1:2008, Annex F	$\geq 800$ mm	Complies	Complies	Complies
Castor chair resistance	EN 425	25 000 cycles	Complies	Complies	Complies
Resistance to staining	EN 438-2	Groups 1 and 2: grade 4 Group 3: grade 3	Complies	Complies	Complies
Residual indentation	EN ISO 24343-1	$\leq 0,3$ mm	Complies	Complies	Complies
Swelling	ISO 24336	$\leq 20$ %	Complies	Complies	Complies
Locking system	ISO 24334	KN/m	-	Complies	-
Micro-scratch	EN 16094	$\leq$ MSR-A2	-	Complies	-
Dimensional Stability (heat conditions)	ISO 23999	$\leq 0,25$ %	-	Complies	-
<b>Safety properties - EN 14041</b>					
Fire resistance	EN ISO 11925-2 + EN ISO 9239-1: Class EN 13501-1	Class	Bfl-s1	Bfl-s1	Dfl-s1
Slip Classification	EN 13893	Class	DS	DS	DS
Slip Resistance	DIN 51130	Class	-	R9	E1
Formaldehyde emission	EN 717-1	Class	E1	E1	Not antistatic
Content pentachlorophenol (PCP)	EN 14041 Annex B	mg/kg	Undetectable	Undetectable	Undetectable
<b>Additional properties</b>					
Impact sound reduction	EN ISO 10140	dB ( $\Delta L_w$ )	16	15	17
Thermal resistance (Thermal conductivity)	EN 12667 EN 12667:2001	( $m^2K$ )/W	R <0,112 -	- 0,0399	-



	Standard	Unit	wood Resist	wood Essence	wood Hydrocork
Dimension (LxWxT)	-	-	1220x185x10,5 mm	1220x185x10,5 mm 1830x185x11,5 mm	1225 x 195 x 6 mm
Mass per unit	-	Kgs / sqm	9,8	9,72 - 1830x185 mm 8,62 - 1220x185 mm	8,12
Packaging (box / pallet)	-	sqm	1,806 / 72,240	2,031 / 89,364 - 1830x185 mm 1,806 / 79,464 - 1220x185 mm	1,672 / 93,632
Level of use Domestic	ISO 10874	Class	23	23	23
Level of use Commercial	ISO 10874	Class	33	32	33
General Properties - EN 16511			EN 16511	EN 12104 - EN 20326	EN 16511
Thickness, t -	EN ISO 24346 ISO 24337	± 0,25 $\Delta t_{avg} \leq 0,50$ mm, relative to nominal value / $t_{max} - t_{min} \leq 0,50$ mm	Complies -	- Complies	- Complies
Length, l	EN ISO 24342 ISO 24337	+/- 0.5% $\leq 1500$ mm: $\Delta l \leq 0,5$ mm / $> 1500$ mm: $\Delta l \leq 0,3$ mm/m	Complies -	- Complies	- Complies
Width, w	EN ISO 24342 ISO 24337	+/- 0,10% $\Delta w_{avg} \leq 0,10$ mm, relative to nominal value / $w_{max} - w_{min} \leq 0,20$ mm	Complies -	- Complies	- Complies
Squareness, q	EN ISO 24342 ISO 24337	< 0,2 $max \leq 0,20$ mm	Complies -	- Complies	- Complies
Straightness, s	EN ISO 24342 ISO 24337	$\leq 0,30$ $max \leq 0,30$ mm/m	Complies -	- Complies	- Complies
Openings, o	ISO 24337	$max \leq 0,20$ mm	Complies	Complies	Complies
Height difference, h	ISO 24337	$h_{max} \leq 0,15$ mm	Complies	Complies	Complies
Flatness of the panel (Length - concave / convex)	ISO 24337	concave $\leq 0,50$ %, / convex $\leq 1,0$ %	Complies	Complies	Complies
Flatness of the panel (Width - concave / convex)	ISO 24337	concave $\leq 0,15$ %, / convex $\leq 0,20$ %	Complies	Complies	Complies
Dimensional Stability	ISO 20326 (Anex C)	$\leq 0,25$ %	Complies	-	-
Classification properties			EN 16511	EN 12104 - EN 20326	EN 16511
Wear resistance IP	EN 15468, procedure B EN 14354 (Annex D)	$\geq 5000$ cycles	Complies -	- Complies	Complies -
Impact resistance [mm] (big ball)	EN 13329:2006+A1:2008, Annex F	$\geq 1600$ mm	Complies	-	Complies
Castor chair resistance	EN 425	25 000 cycles	Complies	Complies	Complies
Resistance to staining	EN 438-2	Groups 1 and 2: grade 5 / Group 3: grade 4	Complies	-	Complies
Residual Indentation	EN ISO 24343-1	$\leq 0,2$ mm $\leq 0,3$ mm	Complies -	- Complies	Complies -
Swelling	ISO 24336	$\leq 18$ %	Complies	Complies	Complies
Dimensional Stability (heat conditions)	ISO 23999	$\leq 0,25$ %	-	-	Complies
Locking system	ISO 24334	Long side $\geq 1$ kN/m / Short side $\geq 2$ kN/m	-	Complies	-
Safety properties - EN 14041					
Fire resistance	EN ISO 11925-2 + EN ISO 9239-1: Class EN 13501-1	Class	Bfl-s2	C fl-s1	Bfl-s1
Slip Classification	EN 13893	Class	DS	DS	DS
Formaldehyde emission	EN 717-1	Class	E1	E1	E1
Electrical behaviour	EN 1815	kV	Antistatic	-	Not antistatic
Content pentachlorophenol (PCP)	EN 14041 Annex B	mg/kg	Undetectable	Undetectable	Undetectable
Additional Properties					
Impact sound reduction	EN ISO 10140	dB ( $\Delta L_w$ )	16	16	16
Walking noise	IHD-W431	dB %	Reduction improvement 11,4 dB Difference of loudness 45,4%	13,2 51,6	Difference of loudness 12,2dB Reduction improvement 42,0%
Thermal resistance (Thermal conductivity)	EN ISO 10456	m2.K/W	0,093	R $\approx$ 0,150	0,05

A photograph of a person's legs from the knees down, wearing grey sweatpants and standing barefoot on a light-colored concrete floor. The person is standing next to a grey fabric sofa. In the background, there is a wooden chair and a white shelf with some items on it. The text "stone" is written in a large, bold, white font, and "Our performance. Your comfort." is written in a smaller, white font below it.

**stone**  
Our performance.  
Your comfort.



# stone Essence

Formats 905 x 295 x 10,5mm  
35 5/8 x 11 5/8 x 3/8"



Floating floor with a multilayered structure composed by the unmatched properties of cork combined with the beauty of selected stone visuals gives to this solution a natural look and feel. The 3,2mm cork top layer will provide an exceptional performance matched with a thermal and acoustic insulation, as well as a superior walking comfort and a warm atmosphere year round.



Concrete Nordic



D89D001  
Concrete Nordic  
80001460  
905x295 x 10,5mm



D88Z001  
Beton Nordic  
80001452  
905x295 x 10,5mm



D89H001  
Azulejo Sand  
80001464  
905x295 x 10,5mm



D89E001  
Concrete Urban  
80001461  
905x295 x 10,5mm



D89I001  
Azulejo Cityzen  
80001465  
905x295 x 10,5mm



D89A001  
Beton Urban \*  
80001457  
905x295 x 10,5mm







D89J001

**Azulejo Forest**  
80001466  
905x295 x 10,5mm



D89F001

**Concrete Corten**  
80001462  
905x295 x 10,5mm



D89B001

**Beton Corten \***  
80001458  
905x295 x 10,5mm



D89K001

**Azulejo Cellar**  
80001467  
905x295 x 10,5mm



Azulejo Cellar



D89G001

Concrete Midnight

80001463

905x295 x 10,5mm



D89C001

Beton Midnight \*

80001459

905x295 x 10,5mm



Beton Corten



# Technical solution

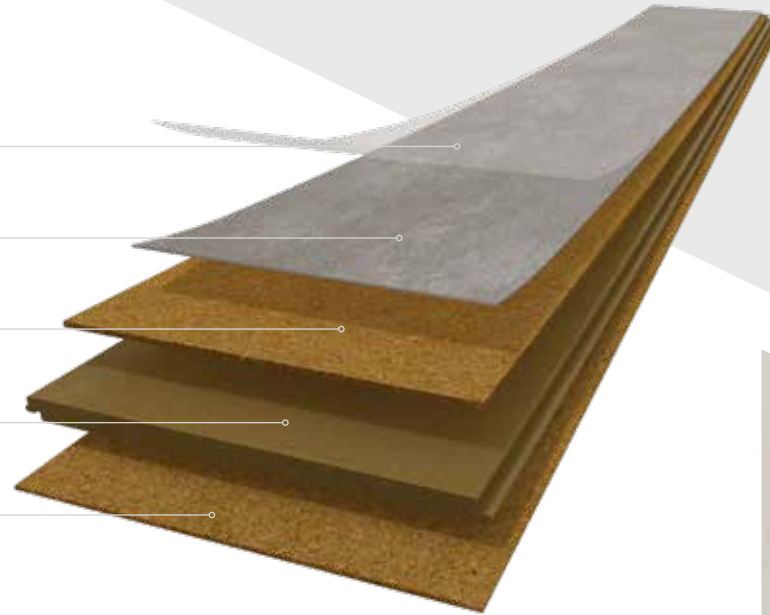
PROTECTIVE SURFACE

HIGH RESOLUTION IMAGE

AGGLOMERATED CORK 3,2MM

HDF – HIGH DENSITY FIBERBOARD WITH CORKLOC

INTEGRATED CORK UNDERLAY 1,2MM



# Finishing & Warranty



NPC surface finish (Natural Power Coat) is the last innovation in varnished cork floors being suitable for the most demanding domestic areas and commercial areas with moderate traffic, achieving a class of 32 (ISO 10874) and AC6 (EN 13329). This green coat also has a very pleasant haptic, which emphasizes the warmth and natural structure of cork.



Greenguard certification identifies products that have low chemical emissions, improving the indoor air quality. The GOLD certification ensures that a product is acceptable for use in environments such as schools and healthcare facilities.



TÜV-PROFICERT is a transnational certificate for VOC-emissions and air quality, certifying that a product complies with different national regulations, such as AgBB, Belgian VOC regulation, Finnish M1 classification, BREEAM Exemplary Level, LEED v4 (outside North America), RAL-UZ 120 and Austrian Eco Label (Guideline UZ 56).



As of January 2012, France has adopted regulations that limit total VOC emissions of building products. Manufacturers, selling their products in France must obtain a classification ranging from A+ (very low emissions) to C (high emissions). The declared goal is to improve indoor air quality in private/ commercial buildings.



An Environmental Product Declaration is a verified document that reports environmental data of products based on life cycle assessment and other relevant information in accordance with the international standard ISO 14025.



The goal of the German Cork Association is to assure the quality of cork products, as well as the optimization of manufacturing processes and the support of research projects.



CE marking is a certification mark that indicates conformity with health, safety and environmental protection standards for products sold within the European Economic Area (EEA).
























## Technical Data Sheet

			stone Essence
Dimension (LxWxT)	-	-	905x295x10,5 mm   35-5/8x11-5/8x13/32"
Mass per unit	-	Kgs / sqm	7,11
Packaging (box / pallet)	-	sqm	2,136 / 76,896
Level of use Domestic	ISO 10874	Class	23
Level of use Commercial	ISO 10874	Class	32
	Standard-Test Method	Unit	
<b>General Properties</b>			<b>EN 12104 - EN 20326</b>
Thickness, t -	EN ISO 24346	± 0,25	Complies
Length, l	EN ISO 24342	+/- 0.5%	Complies
Width, w	EN ISO 24342	+/- 0.10%	Complies
Squareness, q	EN ISO 24342	< 0.2	Complies
Straightness, s	EN ISO 24342	≤ 0,30	Complies
Openings, o	ISO 24337	max ≤ 0,20 mm	Complies
Height difference, h	ISO 24337	hmax ≤ 0,15 mm	Complies
Flatness of the panel (Length - concave / convex)	ISO 24337	concave ≤ 0,50 %, / convex ≤ 1,0 %	Complies
Flatness of the panel (Width - concave / convex)	ISO 24337	concave ≤ 0,15 %, / convex ≤ 0,20 %	Complies
Dimensional Stability	ISO 20326 (Annex C)	≤ 0.25 %	Complies
<b>Classification properties - EN 12104 - EN 20326</b>			
Wear resistance IP	EN 14354 (Annex D)	≥ 5 0000 cycles	Complies
Castor chair resistance	EN 425	25 000 cycles	Complies
Residual Indentation	EN ISO 24343-1	≤ 0,3 mm	Complies
Swelling	ISO 24336	≤ 18%	Complies
Locking system	ISO 24334	Long side ≥ 1 kN/m Short side ≥ 2 kN/m	Complies
<b>Safety Properties - EN 14041</b>			
Fire resistance	EN ISO 11925-2 + EN ISO 9239-1 : Class EN 13501-1	Class	Cfl-s1
Slip Classification	EN 13893	Class	DS
Formaldehyde emission	EN 717-1	Class	E1
Content pentachlorophenol (PCP)	EN 14041 Annex B	mg/kg	Undetectable
<b>Additional properties</b>			
Impact sound reduction	EN ISO 10140	dB (Δ Lw)	16
Walking noise	IHD-W431	dB %	13,2 51,6
Thermal resistance (Thermal conductivity)	EN ISO 10456	m2.K/W	R ≤ 0,150



# Wicanders' Range

LOOKS				
	cork	wood	stone	
RANGE	Go		 	—
	Resist	—	 	—
	<i>Infinitus</i>	—	 	—
	Resist ECO	—	 	—
	Essence	 	 	 
	Hydrocork	—	 	—
 Heavy Traffic Residential areas  Moderate Traffic Commercial areas  Medium Traffic Commercial areas  Heavy Traffic Commercial areas				

The sample images presented in this brochure are cut from larger pieces. Decor and shade may vary slightly.

**Amorim Cork Flooring, S.A.**

Rua do Ribeirinho 202 - P.O. Box 13

4536-907 S. Paio de Oleiros - Portugal

T. +351 22 747 56 00 E. [info.acf@amorim.com](mailto:info.acf@amorim.com)[www.wicanders.com](http://www.wicanders.com)

DE	Amorim Deutschland GmbH	(+49) 4221 5 93-01	<a href="mailto:info.acf.de@amorim.com">info.acf.de@amorim.com</a>
BE NE LUX	Amorim Benelux B.V.	(+31) 166 604 111	<a href="mailto:info.acf.bnl@amorim.com">info.acf.bnl@amorim.com</a>
AT	Amorim Deutschland GmbH	(+43) 1 54 51 65 10	<a href="mailto:info.acf.at@amorim.com">info.acf.at@amorim.com</a>
CH	Amorim Flooring Switzerland AG	(+41) 41 726 20 20	<a href="mailto:info.acf.ch@amorim.com">info.acf.ch@amorim.com</a>
PT	Amorim Cork Flooring, S.A.	(+351) 227 475 600	<a href="mailto:info.acf@amorim.com">info.acf@amorim.com</a>
ES	Amorim Cork Flooring, S.A.	(+351) 227 475 600	<a href="mailto:info.acf.es@amorim.com">info.acf.es@amorim.com</a>
FR	Amorim Cork Flooring, S.A.	(+33) 800 914 848	<a href="mailto:info.acf.fr@amorim.com">info.acf.fr@amorim.com</a>
DK	Timberman Denmark A/S	(+45) 995 252 52	<a href="mailto:timberman@timberman.dk">timberman@timberman.dk</a>
PL	Dom Korkowy, Sp. z o.o.	(+48) 126 379 639	<a href="mailto:krakow@domkorkowy.pl">krakow@domkorkowy.pl</a>
US	Amorim Flooring North America	(+1) 410 553 60 62	<a href="mailto:info.acf.us@amorim.com">info.acf.us@amorim.com</a>
RU	Amorim Flooring Rus, OOO	(+7) 495 280 7860	<a href="mailto:info.acf.ru@amorim.com">info.acf.ru@amorim.com</a>
IT	Amorim Cork Flooring, S.A.	(+39) 068 635 7287	<a href="mailto:info.acf.it@amorim.com">info.acf.it@amorim.com</a>
FI	Korkkitrio Oy	(+358) 50 554 2616	<a href="mailto:wicandersmyynti@korkkitrio.fi">wicandersmyynti@korkkitrio.fi</a>
SW	Amorim Flooring Sweden	(+46) 311 077 40	<a href="mailto:info.acf.se@amorim.com">info.acf.se@amorim.com</a>



**INVESTORS IN PEOPLE®**  
We invest in people Standard

**AMORIM**