

Vinylcomfort



Ultimate Luxury
with the comfort of cork

Nature at your feet



Excellence in flooring

Amorim Revestimentos, the worldwide market leader of cork flooring, places nature on the starting point for a better future, investigating and creating flooring solutions that, without affecting the environment, ensure a higher quality of life.

Being present in more than 51 countries, Amorim Revestimentos' International flooring portfolio and brands, are known throughout the world as pioneers in creating top-quality, ground-breaking solutions.

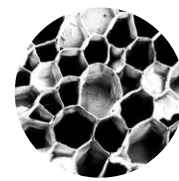
Wicanders®, Amorim Revestimentos' premium brand, has been producing flooring since 1868, always inspired on nature's most pure values and using avant-garde technologies to provide high quality, ecologic and stylish flooring.

Wicanders® has an unsurpassed reputation for providing high standard and unique comfortable flooring solutions, following the latest decoration tendencies and targeting both residential and commercial market segments.

Cork - A truly nature's miracle!

Cork comes from the bark of the cork oak tree. It is removed from the trunk by hand without ever damaging the tree. Every year a new bark grows making it a renewable and sustainable resource. Cork is ideal in terms of the ever increasing demand for conservation of natural resources.

It has unique and incomparable qualities which no ingenious human has yet managed to copy or improve. Cork is made of 40 millions cells per cm³ resembling a "honeycomb structure" which protects the tree from weather temperatures sharp changes. Each cell functions as a miniature natural thermal insulator and also provides above standard sound insulation and shock absorber properties.



Microscopic photo of cork

The exclusive natural qualities of cork make it ideal to use in flooring as it reduces sound, provides an optimal floor temperature throughout the year and is comfortable to walk on.



The sublime balance of Vinyl with Cork flooring

DISTINGUISHED REALISM

The luxury designs with an impressive embossed surface texturing create a remarkable realism that can hardly be tell apart from real natural materials.



OPTIMAL FLOOR TEMPERATURE

The core cork layer plays a vital role in improving the thermal insulation of the floor. The unique thermal insulation features of cork provide an optimal floor temperature all year round, assuring a more warm and comfortable ambience with energy cost savings.



NATURAL NOISE ABSORBER

Cork's natural properties make it an excellent sound absorber. With a core cork layer, **Vinyl**comfort floors are extremely quiet and reduce noise transmission between and within rooms, creating a quieter and peaceful environment in your space.



A HEALTHY CHOICE

The antistatic surfaces of **Vinyl**comfort are especially dust repellent, making them particularly good for those who suffer from allergies. The cork core layer with its shock absorbing characteristics relieves strain on feet, joints and back providing a unique comfort in movement.



IMPACT RESISTANCE

The high quality of the wear layer of **Vinyl**comfort floors makes it extremely resistant to scratches and abrasion. The additional cork core layer has the ability to bounce back from hard impacts due to its elasticity, giving to the floor additional robustness. These factors make it the perfect floor to suit high demanding areas.



Vinylcomfort

The sublime balance was achieved. This contemporary technology combines the luxury of vinyl designs with the unique comfort of cork, accomplished with an excellent reproduction of natural textures.

The realistic wood and stone visuals of this collection, with all the benefits or cork inside, are the perfect choice to create comfortable, warmth and peaceful atmospheres.



Realistic & Durable

The remarkable enduring beauty

Warm & Comfortable

Feel a warm and pleasant touch under your bare feet

Quiet & Healthy

Improve quality of life

Ultimate Luxury

with the comfort of cork

More than just a beautiful floor!

Vinylcomfort product lines have been developed with premium quality and with sophisticated surfaces focus on detailed designs, to warrant the highest quality standards and requirements of any domestic, public or commercial space.

Made of a multilayer structure, it offers a unique and extremely comfortable flooring solution, due to the excellent acoustic and thermal properties given by a resilient and durable incorporated

cork layer. With **Vinylcomfort** floors there is no need to invest in extra underlay to improve sound and thermal properties.

Let Wicanders® introduce you to the new world of **Vinylcomfort** floors with our several product lines, each one with its own functionality and options for living spaces.

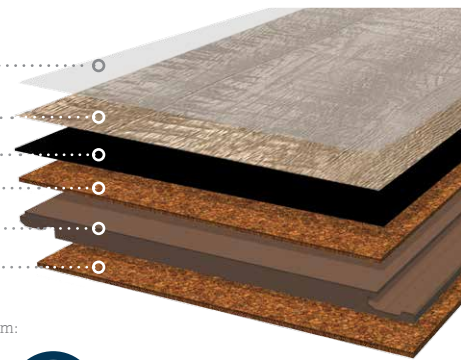
Floating solution

With the glueless Corkloc® installation system, simply put the planks together and securely click them into place. It is a very quick, safe and clean solution.

This solution is available in two different wear layers: a 0,3mm wear layer for domestic areas and a 0,55mm wear layer for commercial areas.

The stone visuals are available in a tile format of 605x445mm or a board format of 905x295mm. All the wood visuals are available in the elegant plank of 1220x185mm.

- Structural wear layer with embossed texture 0,3mm (home) or 0,55mm (commercial)
- High resolution printed film layer
- Solid vinyl core-layer (1,2mm)
- Durable 1,5mm cork comfort layer
- HDF - High Density Fibreboard with Corkloc® (6mm)
- Integrated insulating cork underlay (1,2mm)



Structural wear layer 0.3mm:

Warranty icons for 0.3mm wear layer: 25 Years (Home), 10 Years (Commercial).

Structural wear layer 0.55mm:

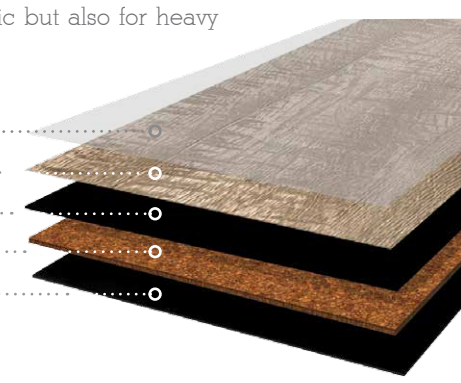
Warranty icons for 0.55mm wear layer: 25 Years (Home), 15 Years (Commercial).

Glue down solution

The glue down solution with its 6mm thickness can be applied on top of almost any existing surface, being ideal for renovation projects. Its strong and balanced structure reduces the telegraphing effect. It only requires the use of one side acrylic adhesive, providing a faster installation.

This solution is available with an elegant plank dimension of 1230 x 150 x 6mm with 4 sides beveled and has a 0,55mm wear layer, suitable not only for domestic but also for heavy traffic areas.

- Protective 0,55mm hard wearing surface layer with embossed texture
- High resolution printed film layer
- Solid vinyl core-layer (1,2mm)
- Durable 3mm cork comfort layer
- Embossed vinyl balance layer (1,2mm)



Warranty icons for glue-down solution: 25 Years (Home), 15 Years (Commercial).

Natural realistic look!

Richness textures for an intense and natural realism

Specific surface textures were developed in order to offer a remarkable realism for every type of floor. Smooth, grained or brushed – inspired by the most traditional wood & stone working techniques – **Vinyl**comfort floor touches your desire with its luxurious look.



Moonscape Stone

Delicate small rims resembling the moon surface.



Volcanic stone

A soft and sophisticated structure.



Sliced stone

The gross stone strong texture.



Grained stone

A natural smooth and fine touch.



Fine pore wood

A plain appearance surface with a smooth touch.



Brushed wood

A strong wood texture with a brushed effect.

Authentic
Embossed
Texture

Synchronized
perfection of
wood grain
and knots

Authentic Embossed Texture for a Natural Look and Feel

With the registered embossing revolutionary technology, Wicanders is able to perfectly synchronize impressive surface textures to each luxurious design intensifying the feeling of depth. The result is a high quality floor where the natural textures can hardly be told apart from real materials. Four amazing designs were created to suit all kind of styles.



Century

A rustic pine with knots that inspires iconic ambiances with centuries past.



Arcadian

A washed weather-beaten alpine larch that give a rustic flare in any modern space.



Castle

A brushed antic oak that will add unique and authentic rustic character to any space.



Sawn

A sawn white washed oak, ideal to add contrast to a modern interior design or to underline a rustic country style.

Light shades

Creating light and space

The light shades bright up and amplify spaces, providing a pure and serene atmosphere. Due to its extreme versatility it is the perfect choice for the base of modern decorations.



Wheat Pine

B7R3001 - 1230 x 150 x 6mm | **Glue down 0,55mm wear layer**
BOR3001 - 1220 x 185 x 10,5mm | **Floating 0,55mm wear layer**



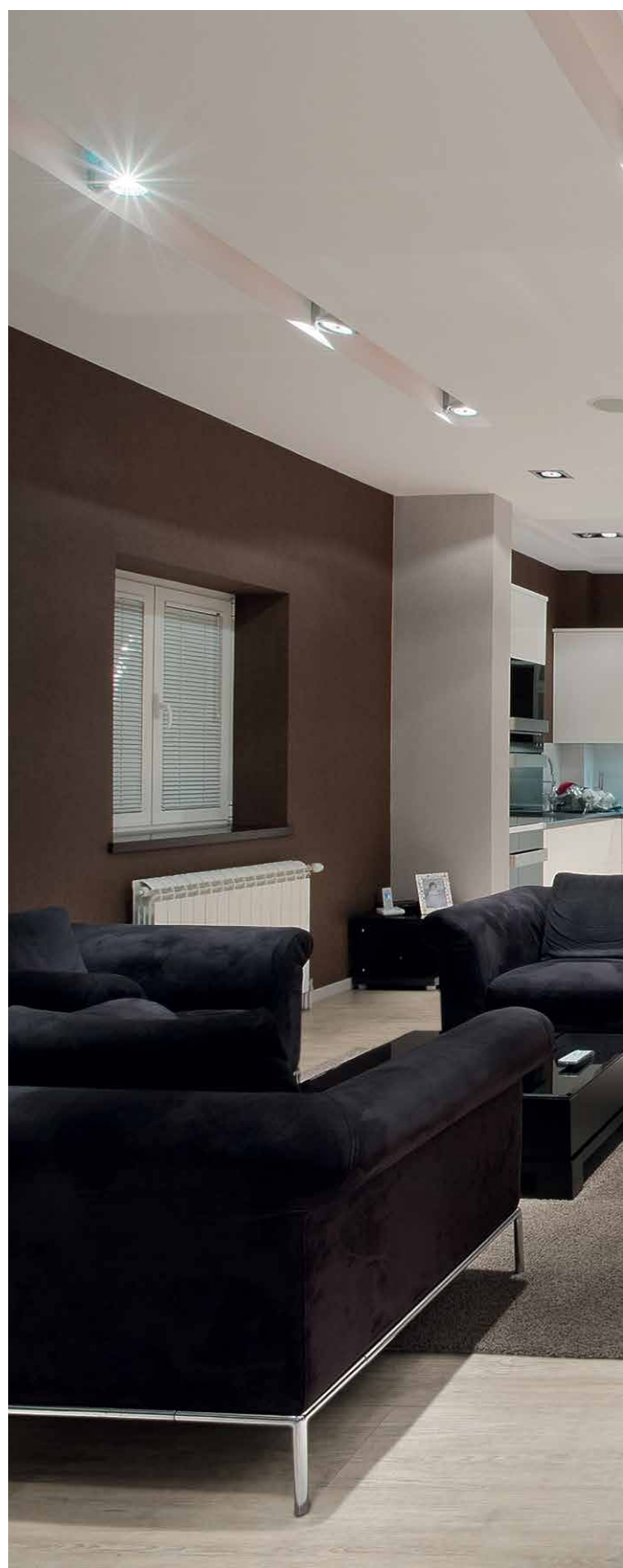
Light Beech

B7T0001 - 1230x150x6mm | **Glue down 0,55mm wear layer**
BOT0003 - 1220 x 185 x 10,5mm | **Floating 0,3mm wear layer**
BOT0002 - 1220 x 185 x 10,5mm | **Floating 0,55mm wear layer**



Sand Oak

B7R1001 - 1230 x 150 x 6mm | **Glue down 0,55mm wear layer**
BOR1001 - 1220 x 185 x 10,5mm | **Floating 0,55mm wear layer**





Maple

B7T8001 - 1230 x 150 x 6mm | **Glue down 0,55mm wear layer**
B0T8002 - 1220 x 185 x 10,5mm | **Floating 0,55mm wear layer**



Linen Cherry

B7R0001 - 1230 x 150 x 6mm | **Glue down 0,55mm wear layer**
B0R0001 - 1220 x 185 x 10,5mm | **Floating 0,55mm wear layer**



Expressive contrasts

The expressive shapes, are a perfect choice to create a unique and astonishing organic look, with unique effects and nuances, that will enrich interior atmospheres.

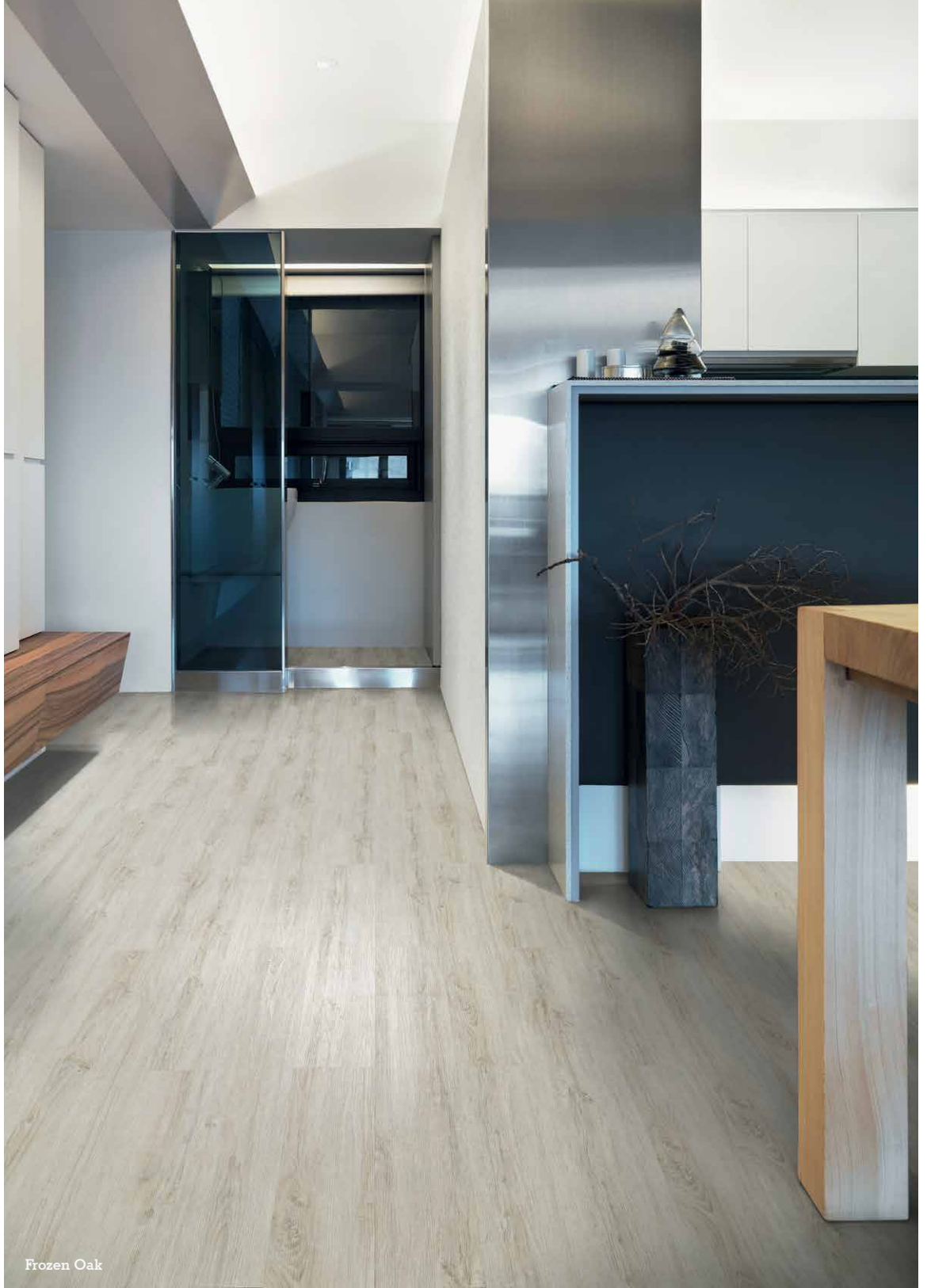


Olive Ash

BON7001 - 1220 x 185 x 10,5mm | Floating 0,3mm wear layer



Olive Ash



Frozen Oak



Nordic Ash
B7V4001 - 1230 x 150 x 6mm | **Glue down 0,55mm wear layer**
B0V4001 - 1220 x 185 x 10,5mm | **Floating 0,55mm wear layer**



Frozen Oak
B0N9001 - 1220 x 185 x 10,5mm | **Floating 0,3mm wear layer**

The **Modern Rustic** light visuals are perfect to create a casually elegant decor with a harmonious and welcoming interior.



Limed Grey Oak

B7T7001 - 1230 x 150 x 6mm | **Glue down 0,55mm wear layer**
B0T7001 - 1220 x 185 x 10,5mm | **Floating 0,55mm wear layer**



Rustic Limed Gray Oak

B7U0001 - 1230x150x6mm | **Glue down 0,55mm wear layer**
B0U0001 - 1220 x 185 x 10,5mm | **Floating 0,55mm wear layer**



Claw Silver Oak

B7V3001 - 1230 x 150 x 6mm | **Glue down 0,55mm wear layer**
B0V3001 - 1220x185x10,5mm | **Floating 0,55mm wear layer**



Alaska Oak

B0Q0003 - 1220 x 185 x 10,5mm | **Floating 0,3mm wear layer**



Synchronized perfection of wood grain and knots

With the registered embossing revolutionary technology, Wicanders is able to perfectly synchronize impressive surface textures to each luxurious design intensifying the feeling of depth.



Castle Toast Oak

B7P1001 - 1230 x 150 x 6mm

| Glue down 0,55mm wear layer

B0P1001 - 1220 x 185 x 10,5mm

| Floating 0,55mm wear layer



Castle Raffia Oak



Castle Raffia Oak

B7P0001 - 1230 x 150 x 6mm

| Glue down 0,55mm wear layer

B0P0001 - 1220 x 185 x 10,5mm

| Floating 0,55mm wear layer



Arcadian Soya Pine

B7P4001 - 1230 x 150 x 6mm

| Glue down 0,55mm wear layer

B0P4001 - 1220 x 185 x 10,5mm

| Floating 0,55mm wear layer



Arcadian Rye Pine

B7P5001 - 1230 x 150 x 6mm

| Glue down 0,55mm wear layer

B0P5001 - 1220 x 185 x 10,5mm

| Floating 0,55mm wear layer



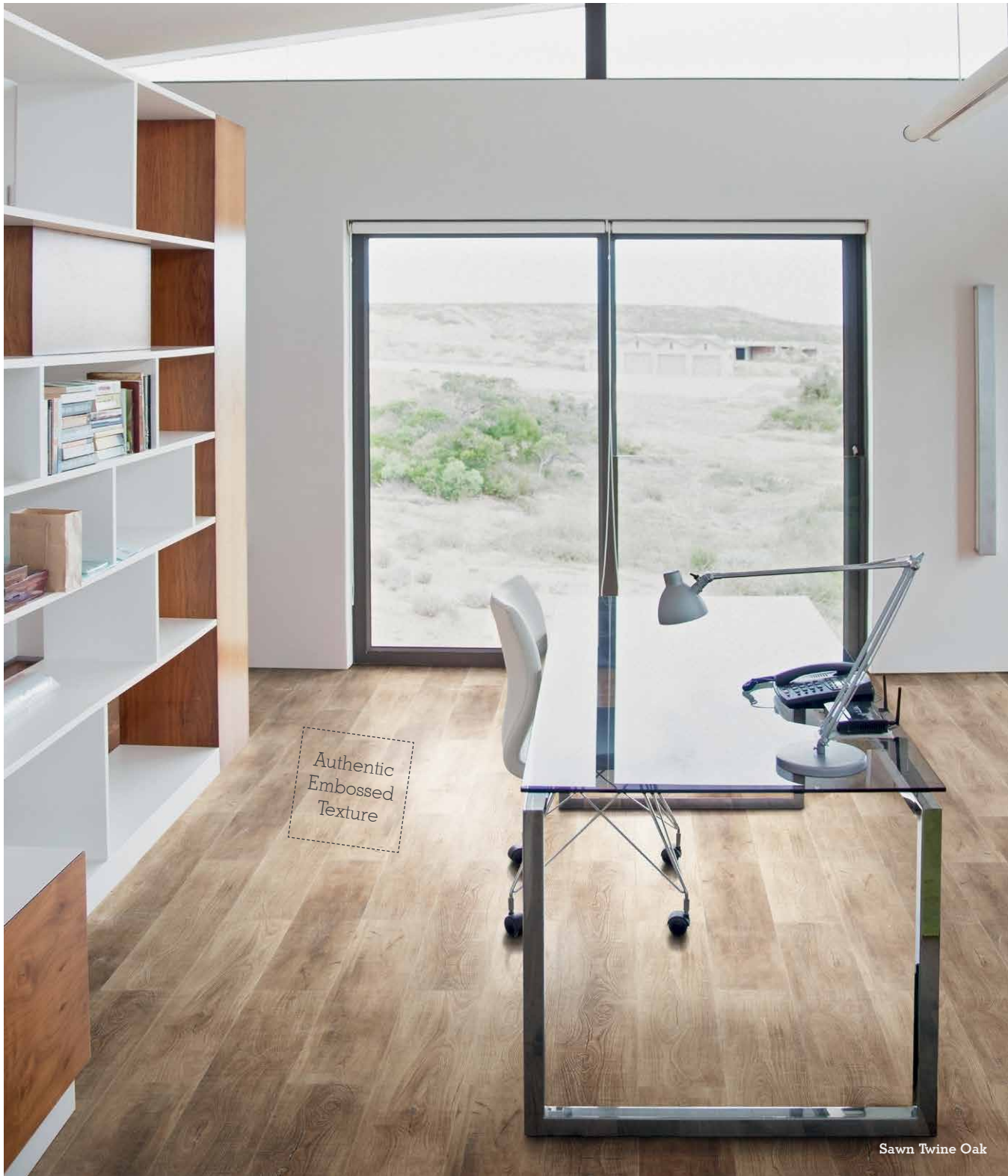
Sawn Twine Oak

B7P2001 - 1230 x 150 x 6mm | **Glue down 0,55mm wear layer**
BOP2001 - 1220 x 185 x 10,5mm | **Floating 0,55mm wear layer**



Sawn Bisque Oak

B7P3001 - 1230 x 150 x 6mm | **Glue down 0,55mm wear layer**
BOP3001 - 1220 x 185 x 10,5mm | **Floating 0,55mm wear layer**



Authentic
Embossed
Texture

Natural shades

Create an ambiance of total relaxation

The natural look of classic and neutral shades opens the door to a timeless beauty. Genuinely classic or freely modern, you'll breathe peace and tranquility in an ambiance with natural wooden designs.



Provence Oak



Amber Cherry

B0Q7003 - 1220 x 185 x 10,5mm | **Floating 0,3mm wear layer**



Chalk Oak

B0Q1003 - 1220 x 185 x 10,5mm | **Floating 0,3mm wear layer**



Elegant Oak

B7R4001 - 1230 x 150 x 6mm | **Glue down 0,55mm wear layer**
B0R4001 - 1220 x 185 x 10,5mm | **Floating 0,55mm wear layer**



Claw Brass Oak

B7V2001 - 1230 x 150 x 6mm | **Glue down 0,55mm wear layer**
B0V2001 - 1220x185x10,5mm | **Floating 0,55mm wear layer**



Nature Oak

B7T5001 - 1230x150x6mm | **Glue down 0,55mm wear layer**
B0T5001 - 1220 x 185 x 10,5mm | **Floating 0,55mm wear layer**



Provence Oak

B0Q3003 - 1220 x 185 x 10,5mm | **Floating 0,3mm wear layer**



Reddish shades

A warm and exotic touch

The reddish shades are the perfect choice to create a warm and comfortable atmosphere with a touch of vitality and life.





European Oak

B0Q2004 - 1220 x 185 x 10,5mm | **Floating 0,3mm wear layer**



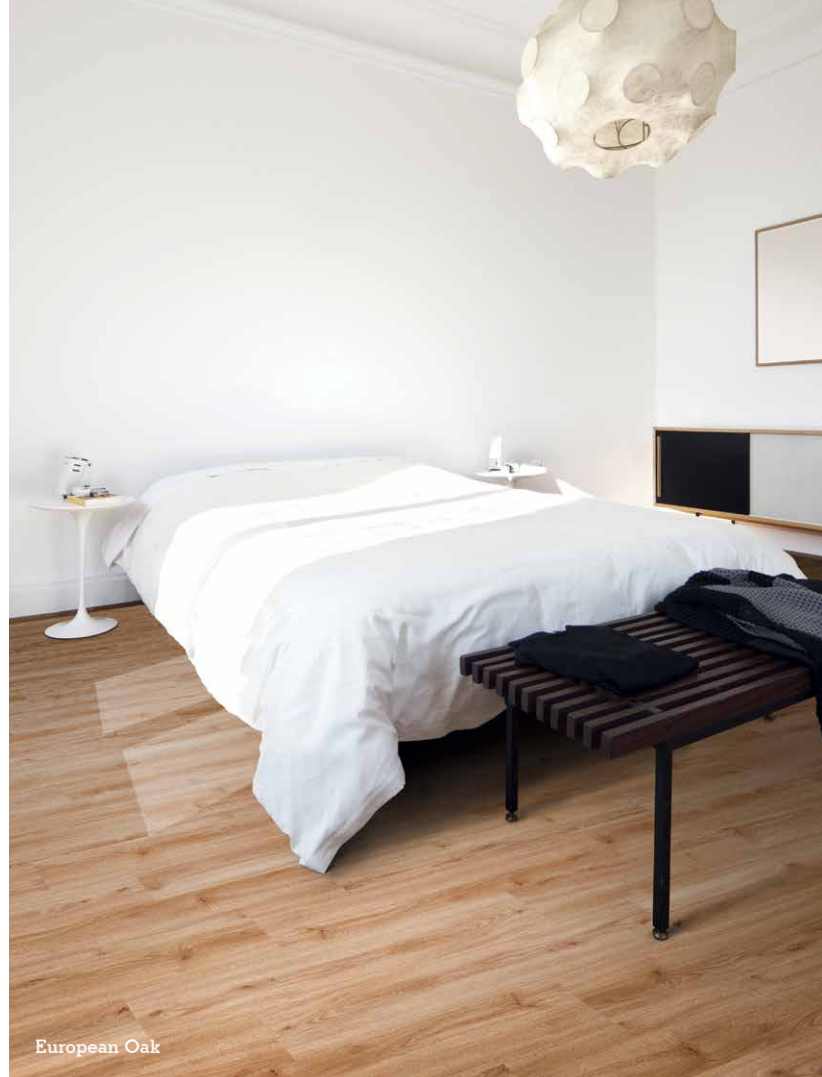
Light Sucupira

B0C9001 - 1220 x 185 x 10,5mm | **Floating 0,3mm wear layer**



European Cherry

B7R2001 - 1230 x 150 x 6mm | **Glue down 0,55mm wear layer**
B0R2001 - 1220x185x10,5mm | **Floating 0,55mm wear layer**



Brown shades

Radiate noble elegance and charm

The warm and attractive brown shades integrate your space giving an intimate feeling to it. They are the ideal selection for stylish perspectives in modern decors.



Tobacco Pine

B7R6001 - 1230 x 150 x 6mm | Glue down 0,55mm wear layer
BOR6001 - 1220 x 185 x 10,5mm | Floating 0,55mm wear layer



Autumn Rustic Pine

B7U5001 - 1230 x 150 x 6mm | Glue down 0,55mm wear layer
BOU5001 - 1220 x 185 x 10,5mm | Floating 0,55mm wear layer



Rustic Sand Pine

B7U2001 - 1230 x 150 x 6mm | Glue down 0,55mm wear layer
BOU2001 - 1220 x 185 x 10,5mm | Floating 0,55mm wear layer



Croft Oak

BOV9001 - 1220 x 185 x 10,5mm | Floating 0,3mm wear layer



Bark Oak

BOV8001 - 1220 x 185 x 10,5mm | Floating 0,3mm wear layer



Bark Oak



The **Smoked look** visuals brings a subtle smoked texture tone to the mix of warm and attractive brown shades. It would grace any living or dining area with its deep tones and natural knots and whorls.



Smoked Oak

B0Q5003 - 1220 x 185 x 10,5mm | **Floating 0,3mm wear layer**



Dry Smoked Oak

B7T3001 - 1230 x 150 x 6mm | **Glue down 0,55mm wear layer**
B0T3002 - 1220x185x10,5mm | **Floating 0,55mm wear layer**



Smoked Rustic Oak

B7U4001 - 1230 x 150 x 6mm | **Glue down 0,55mm wear layer**
B0U4001 - 1220 x 185 x 10,5mm | **Floating 0,55mm wear layer**



Century Morocco Pine

B7P6001 - 1230 x 150 x 6mm | **Glue down 0,55mm wear layer**
B0P6001 - 1220 x 185 x 10,5mm | **Floating 0,55mm wear layer**



Century Fawn Pine

B7P7001 - 1230 x 150 x 6mm | **Glue down 0,55mm wear layer**
B0P7001 - 1220 x 185 x 10,5mm | **Floating 0,55mm wear layer**



Authentic
Embossed
Texture

Intense Grey shades

The foundation of a strong character

A grey gradient floor gives a strong statement to your space whatever style of living and furnishing you may choose. Among the dark grey floors you'll emphasize your avant-garde taste, creating individual and expressive vibrations.



Limed Dark Oak

B7U1001 - 1230 x 150 x 6mm | Glue down 0,55mm wear layer
B0U1001 - 1220 x 185 x 10,5mm | Floating 0,55mm wear layer





Cinder Oak

B7R7001 - 1230 x 150 x 6mm | **Glue down 0,55mm wear layer**
BOR7001 - 1220 x 185 x 10,5mm | **Floating 0,55mm wear layer**



Brume Oak

BON8001 - 1220 x 185 x 10,5mm | **Floating 0,3mm wear layer**



Brume Oak



Limed Forest Oak

B7U3001 - 1230 x 150 x 6mm | **Glue down 0,55mm wear layer**
BOU3001 - 1220 x 185 x 10,5mm | **Floating 0,55mm wear layer**



Washed Pine

B7T9001 - 1230 x 150 x 6mm | **Glue down 0,55mm wear layer**
BOT9001 - 1220 x 185 x 10,5mm | **Floating 0,55mm wear layer**

Stones essence

An authentic experience

Stone patterns have the essence of a Mediterranean look and a fine grained touch. The most charming details of a stone, complemented with the unique advantages of cork, invite you to enjoy the stunning effect of a comfortable laid stone floor.



White Ceramic



White Ceramic
BOP8001 - 905 x 295 x 10,5mm | **Floating 0,3mm wear layer**



Beige Ceramic
BOP9001 - 905 x 295 x 10,5mm | **Floating 0,3mm wear layer**



Raw Umber
B000001 - 905 x 295 x 10,5mm | **Floating 0,3mm wear layer**



Bianco Travertine
B002001 - 905 x 295 x 10,5mm | **Floating 0,3mm wear layer**



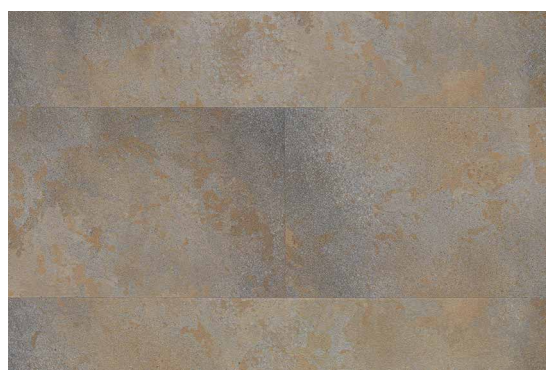
With the more **strong and sophisticated** stone visuals, modern decors get a unique character, inspired in nature organic shapes, which will turn your floor into a décor statement.



Coal Slate
B001001 - 905 x 295 x 10,5mm | Floating 0,3mm wear layer



Coal Slate



Volcanic Ash
B003001 - 905 x 295 x 10,5mm | Floating 0,3mm wear layer



Sandstone
BOS9001 - 605 x 445 x 10,5mm | **Floating 0,55mm wear layer**



Volcanic Stone
BOS8001 - 605 x 445 x 10,5mm | **Floating 0,55mm wear layer**



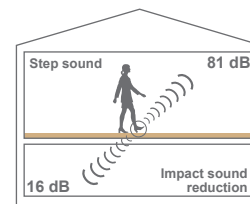
Why are Wicanders® floors the **perfect choice**?

Acoustical properties – **Sound reduction**

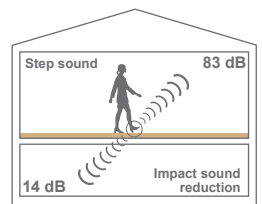


Wicanders® floors are exceptionally efficient to use whenever noise reduction is critical, or desired. Cork is an extremely efficient natural sound absorber, cutting noise within a room when someone walks on the floor (step sound) and even acting as a noise buffer between the floor and the rooms underneath (impact sound). **Vinylcomfort** floors have incorporated in their structure resilient and durable cork layers.

Vinylcomfort Floating

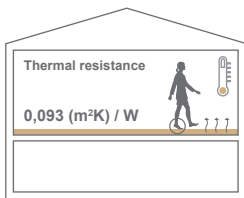


Vinylcomfort Glue down

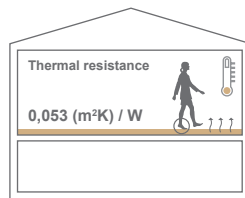


Thermal Properties – **Warmth**

Vinylcomfort Floating



Vinylcomfort Glue down



The natural thermal insulation properties of cork layer make Wicanders® **Vinylcomfort** floors energy efficient, providing an optimal floor temperature all year round which contributes to the overall comfort.

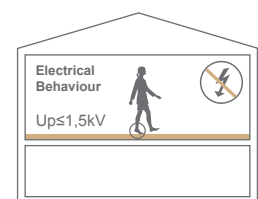


Antistatic properties – **Healthy**



The antistatic surfaces of **Vinylcomfort** prevent you from static electricity and are especially dust repellent, making them particularly good for those who suffer from allergies. The cork core layer with its shock absorbing characteristics relieves strain on feet, joints and back providing a unique comfort in movement.

Vinylcomfort Floating
Vinylcomfort Glue down





Impact resistant

Due to the unique resilient properties of incorporated cork layers and the strong vinyl layer, **Vinylcomfort** floors surface has the ability to recover back from impacts, making it more durable and resistant than hard surface floors, like wood or tiles.



No telegraphing effect

The unique combination between Vinyl & Cork layers provides to **Vinylcomfort** floors a strong and balanced structure, making it capable to reduce significantly the telegraphing effect.



Durable

The special structure and surface finishing of **Vinylcomfort** floors withstand years of wear and still look as good and beautiful as the day they were installed.



Remarkable realism

The exclusive wood and stone designs combined with a fine embossed surface, offer a remarkable and distinct realism to **Vinylcomfort** floors.



Fast&Easy Installation

Floating floors with CorkLoc® 2G system are easier and faster to install. Even with glue down floors there is no need of a special subfloor preparation or of the use of a unilateral glue, so they save time and reduce installation expenses.



Low & Easy Maintenance

The special surface finishing of **Vinylcomfort** floors make them easier to clean and maintain.



Think green choose Cork products!

Wicanders® cork integrated products use a truly sustainable material! Produced by Amorim, it represents a unique balance between the creation of wealth and the protection of the environment. The starting point is a raw material that is extracted cyclically from the cork oak trees without ever damaging them. This raw material is then transformed into high value-added products while promoting the economic and social sustainability of areas at risk of desertification.

Several eco-efficiency studies, based on a comparative analysis with several other types of flooring, illustrate the excellent environmental performance of Wicanders® products and its manufacturing process. Besides the smaller amounts of energy and raw materials required for the manufacturing process, these products actively contribute to reducing global warming, not only through their low emissions, but also due to cork's natural property of retaining CO₂.

It is estimated that the Portuguese cork oak forest – montado – is responsible for retaining 5% of the country's annual CO₂ emission, representing 4.8 million tons per year.



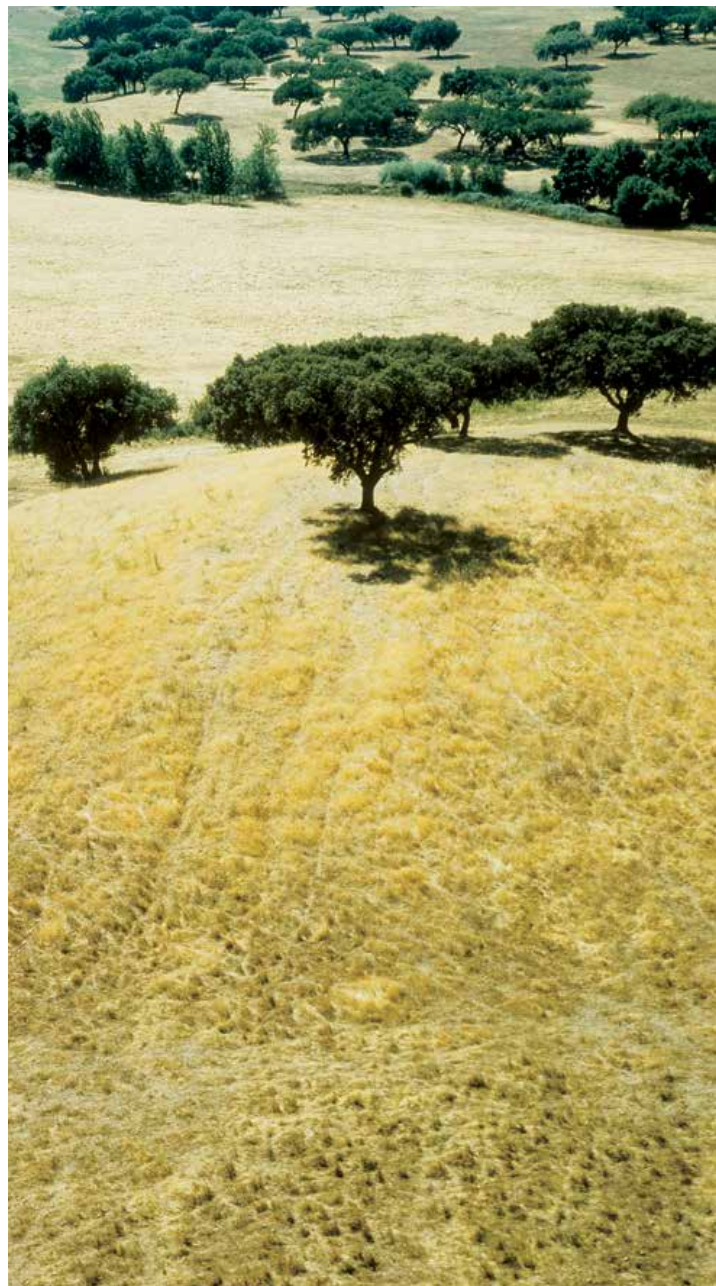
The importance of Cork Oak

The Cork Oak (*Quercus Suber L.*) is a tree belonging to the Oak family from which Cork is extracted. Its value is based not only on the products extracted from the tree, but on all of the agricultural, forest, pastoral and hunting activities that revolve around the cultivation of the Cork Oak.

Regular extraction of the Cork (a process called stripping) is a fundamental contribution for environmental, economic and social sustainability in the rural areas of the Mediterranean region where the Cork Oak may be found.

The Cork tree is a slow growing tree, which may live for 200 years, which allows it, on average, to be stripped 16 times during its lifetime. The first extraction of cork from the Cork Oak tree occurs only 25 years after planting, following which it is harvested in 9 year cycles, without ever damaging the tree in any way. This method allows the cork oak forest to fulfill its role of fixing CO₂, thus actively contributing to reduce global warming.

The Cork forest in Portugal (700.000 hectares), known as "Montado", is a typical Iberian Landscape which is key in supporting a natural bio-diversity, including some of the most endangered species in the world: Iberian Lynxes, Imperial Eagles', Black Storks, Wolves and Wild Bears.










**A
GIFT
FROM
NATURE**

Product Selector

		Vinylcomfort Floating				Vinylcomfort Glue down
		0,3mm Wear Layer		0,55mm Wear Layer		0,55mm Wear Layer
Class of Use (EN 685)		32	32	33	33	33 / 42
Thickness (mm)		10,5	10,5	10,5	10,5	6
Dimension (mm)		905x295	1220x185	605x445	1220x185	1230x150
Embossing		Yes	Yes	Yes	Yes	Yes
Beveling		No	No	4 sides	4 sides	4 sides
Wood	Textures					
Amber Cherry	Fine pore wood		B0Q7003			
Light Sucupira	Fine pore wood		B0O9001			
Light Beech	Fine pore wood		B0T0003		B0T0002	B7T0001
Linen Cherry	Fine pore wood				B0R0001	B7R0001
European Cherry	Fine pore wood				B0R2001	B7R2001
Elegant Oak	Fine pore wood				B0R4001	B7R4001
Nature Oak	Fine pore wood				B0T5001	B7T5001
Limed Grey Oak	Fine pore wood				B0T7001	B7T7001
Dry Smoked Oak	Fine pore wood				B0T3002	B7T3001
Maple	Fine pore wood				B0T8002	B7T8001
Nordic Ash	Fine pore wood				B0V4001	B7V4001
Alaska Oak	Brushed wood		B0Q0003			
Chalk Oak	Brushed wood		B0Q1003			
European Oak	Brushed wood		B0Q2004			
Provence Oak	Brushed wood		B0Q3003			
Smoked Oak	Brushed wood		B0Q5003			
Olive Ash	Brushed wood		B0N7001			
Brume Oak	Brushed wood		B0N8001			
Frozen Oak	Brushed wood		B0N9001			
Bark Oak	Brushed wood		B0V8001			
Croft Oak	Brushed wood		B0V9001			
Sand Oak	Brushed wood				B0R1001	B7R1001
Wheat Pine	Brushed wood				B0R3001	B7R3001
Tobacco Pine	Brushed wood				B0R6001	B7R6001
Cinder Oak	Brushed wood				B0R7001	B7R7001
Washed Pine	Brushed wood				B0T9001	B7T9001
Rustic Limed Gray Oak	Brushed wood				B0U0001	B7U0001
Limed Dark Oak	Brushed wood				B0U1001	B7U1001
Rustic Sand Pine	Brushed wood				B0U2001	B7U2001
Limed Forest Oak	Brushed wood				B0U3001	B7U3001
Smoked Rustic Oak	Brushed wood				B0U4001	B7U4001
Autumn Rustic Pine	Brushed wood				B0U5001	B7U5001
Claw Brass Oak	Brushed wood				B0V2001	B7V2001
Claw Silver Oak	Brushed wood				B0V3001	B7V3001
Castle Raffia Oak	Authentic embossed texture				B0P0001	B7P0001
Castle Toast Oak	Authentic embossed texture				B0P1001	B7P1001
Sawn Twine Oak	Authentic embossed texture				B0P2001	B7P2001
Sawn Bisque Oak	Authentic embossed texture				B0P3001	B7P3001
Arcadian Soya Pine	Authentic embossed texture				B0P4001	B7P4001
Arcadian Rye Pine	Authentic embossed texture				B0P5001	B7P5001
Century Morocco Pine	Authentic embossed texture				B0P6001	B7P6001
Century Fawn Pine	Authentic embossed texture				B0P7001	B7P7001
Stone						
Raw Umber	Grained stone	B0O0001				
Bianco Travertine	Grained stone	B0O2001				
Volcanic Ash	Grained stone	B0O3001				
Volcanic Stone	Volcanic stone			B0S8001		
Sandstone	Volcanic stone			B0S9001		
Coal Slate	Sliced stone	B0O1001				
White Ceramic	Moonscape stone	B0P8001				
Beige Ceramic	Moonscape stone	B0P9001				

Technical Data Sheet

			Vinylcomfort Glue down 0,55mm Wear Layer 1230 x 150 x 6 mm	Vinylcomfort Floating 0,55mm Wear Layer 1220 x 185 x 10,5 mm 605 x 445 x 10,5mm	Vinylcomfort Floating 0,3mm Wear Layer 1220 x 185 x 10,5 mm 905 x 295 x 10,5mm
Level of use Domestic	EN 685	Class	23 	23 	23 
Level of use Commercial	EN 685	Class	33 	33 	32 
Level of use Industrial	EN 685	Class	42 	-	-
General properties	Standard-Test Method	Unit	Specification EN 655 + EN 649	Specification EN 14085 + EN 649	Specification EN 14085 + EN 649
Dimensions	EN 427	mm	≤ 0,13% up to 0,5mm max.	± 0,10% up to width: max. 0,5 mm length: max. 2,0 mm	± 0,10% up to width: max. 0,5 mm length: max. 2,0 mm
Overall thickness	EN 428	mm	± 0,20	± 0,25	± 0,25
Squareness and Straightness ≤ 400mm > 400mm	EN 427	mm	≤ 0,25 ≤ 0,35	-	-
Straightness measured at the surface layer	EN 427	mm	-	≤ 0,30	≤ 0,30
Squareness	EN 427	mm	-	≤ 0,50	≤ 0,50
Thickness of agglomerated composition cork base	EN 429	mm	≥ 3	-	-
Apparent density	EN 672	Kg/m ³	-	Nominal value (960) ± 50	Nominal value (900) ± 50
Mass per unit area	EN 430	g/m ²	Nominal value (7000) -10%; + 13 %	Nominal value (10150) - 10 % + 13%	Nominal value (9800) - 10 % + 13%
Density of wear layer	EN 436	Kg/m ³	Nominal value (1240) ± 50	-	-
Dimensional stability (humidity)	EN 669 (Annex C)	mm	-	≤ 5	≤ 5
Dimensional stability (heat)	EN 434	%	≤ 0,4	-	-
Openings between panels	EN 14085 (Annex B)	mm	-	≤ 0,20	≤ 0,20
Height difference between panels	EN 14085 (Annex B)	mm	-	≤ 0,20	≤ 0,20
Flatness of the panel (Length - Concave / Convex)	EN 14085 (Annex A)	%	-	≤ 0,50 / ≤ 1,0	≤ 0,50 / ≤ 1,0
Flatness of the panel (Width - Concave / Convex)	EN 14085 (Annex A)	%	-	≤ 0,10 / ≤ 0,15	≤ 0,10 / ≤ 0,15
Residual indentation	EN 433	mm	≤ 0,20	≤ 0,15	≤ 0,15
Curling after exposure to heat	EN 434	mm	≤ 6	-	-
Colour fastness	EN ISO 105-BO2	Blue wool scale	≥ 6	≥ 6	≥ 6
Classification properties - EN 655 + EN 649 + EN 14085					
Wearing Group	EN 660-1	Thickness loss (Δ lmm)	Wear group T	Wear group T	Wear group T
Overall thickness (Vinyl + Cork layer)	EN 428	mm	≥ 3,0	≥ 3,0	≥ 3,0
Thickness of wear layer (Wear Group T)	EN 429	mm	≥ 0,55	≥ 0,55	≥ 0,3
Castor chair	EN 425	Visual effect - after 25 000 cycles	No disturbance to the surface other than slight change in appearance and no delamination shall occur	No disturbance to the surface other than slight change in appearance and no delamination shall occur	No disturbance to the surface other than slight change in appearance and no delamination shall occur
Simulated movement of a furniture leg	EN 424	Visual effect	No damage shall be visible after testing with a type 2 foot	No damage shall be visible after testing with a type 2 foot	No damage shall be visible after testing with a type 2 foot
Safety properties - EN 14041					
Fire resistance	EN 13501-1	Class	Bfl s1	Bfl s1	Bfl s1
Slip Classification	EN 13893	Class	DS	DS	DS
Formaldehyde emission	DIN EN 717-1	Class	E1	E1	E1
Electrical behaviour	EN 1815	kV	Antistatic	Antistatic	Antistatic
Content pentachlorophenol (PCP)	CEN/TR 14823 (ihd-W 409)	mg/Kg	PCP Free	PCP free	PCP free
Additional properties					
Stains Resistance	EN 423 (a)	Grade	Grade 0 (b) *	Grade 0 (b) *	Grade 0 (b)
Thermal resistance	EN 12667	(m ² K)/W	0,053	0,093	0,112
Impact sound reduction	ISO 140-8	dB (Δ Lw)	14	16	16
Step sound/ Step sound reduction	NF S 31 - 074	L _{n,e,w} (dB)/ΔE _{pw} (dB)	83/6 (c)	81	81

- (a) The following products were tested: Desinfectant, C2H5OH, NH4OH, Citric acid, iodine, petroleum, spirit
 (b) Grade 0 - Unchanged / Grade 1 - Very little change / Grade 2 - Little change / Grade 3 - Change / Grade 4 - Strong Change
 * Except Iodine - Grade 2 - Little change
 (c) Slab with Vinylcomfort glue down reduces the step sound in 6dB when compared with the reference slab.



AMORIM

Excellence in flooring



- | | |
|---|--|
| NL/BE/LU Amorim Benelux B.V., (+31) 166 604 111.....info.ar.nl@amorim.com | CN Amorim Revestimentos, Macau, (+85) 366 625 06.....mario1104@hotmail.com |
| DE Amorim Deutschland GmbH, (+49) 4221 59 301.....germany.ar.de@amorim.com | JP Amorim Japan Corporation, (+81) 03 557 569 09.....amorimjapan.ar@amorim.com |
| AT Amorim Flooring Austria, (+43) 1 545 16 51 0.....austria.ar.de@amorim.com | DK Timberman Denmark A/S, (+45) 99 525 252.....timberman@timberman.dk |
| CH Amorim Flooring (Switzerland) AG, (+41) 41 726 20 20.....info@amorim.ch | PL Dom Korkowy, Sp. z o.o., (+48) 12 637 9639.....krakow@domkorkowy.pl |
| ES Amorim Revestimentos, S.A., (+34) 902 307 407info.ar.es@amorim.com | US/CA Amorim Flooring North America, (+1) 410 553 6062.....info.ar.us@amorim.com |
| FR Amorim Revestimentos, S.A., (+33) 800 914 848.....geral.ar@amorim.com | HeadQuarters Amorim Revestimentos, S.A., (+351) 22 747 5600.....geral.ar@amorim.com |

www.wicanders.com

