



WICANDERS®

Nature at your feet

Vinylcomfort



Ultimate Luxury
with the comfort of cork



Cork is a natural material that comes from the bark of the cork oak tree, with unique and incomparable qualities that no ingenious human has yet managed to copy or improve. Its cell structure resembles a honeycomb, enabling it to act as a natural thermal and sound insulator and also providing shock absorbing properties.

These exclusive qualities of cork make it ideal to use in flooring, as it grants an exceptional comfort while also being a renewable and sustainable resource.



Over the years, Wicanders has developed floor and wall coverings with exclusive properties due to its innovative Corktech technology.

By using a unique engineered multilayer structure, which combines state of the art technology with the exclusive natural properties of cork, a higher standard in flooring was achieved, providing the perfect match between beauty, comfort and durability.

Vinylcomfort floors accomplish the ultimate luxury with highly detailed vinyl designs that result in realistic and sophisticated reproductions of wood and stone textures.

The uniqueness of **Vinyl**comfort floors was achieved by integrating a prime quality core layer of cork, which provides superior comfort, noise reduction and warmth. An integrated cork underlay reinforces thermal and acoustic properties, resulting in a silent environment and important energy cost savings.



Wear layer with embossed texture

High resolution printed film

Solid vinyl core

Agglomerated cork
Step sound reduction,
warmth & comfort

High density fiberboard

Insulating cork underlay
Impact sound reduction,
& thermal reinforcement



MORE THAN JUST A BEAUTIFUL FLOOR



+ SILENCE

Cork's natural properties make it an excellent sound absorber. **Vinyl**comfort floors reduce noise transmission between and within rooms, creating a quieter and peaceful environment.



+ NATURAL THERMAL INSULATION

The unique thermal insulation features of cork provide an optimal floor temperature all year round, assuring a more warm and comfortable ambiance with energy cost savings.



+ WALKING COMFORT

Vinylcomfort floors are very comfortable to walk on due to cork's natural and inherent flexibility providing a unique comfort in movement. Even when walking barefoot, a sense of cosiness is felt.



+ BODY WELLNESS

Softer than wood and harder than carpets, the perfect mix to absorb heel strike impacts, relieving leg and back stress, but stable enough to help the foot impulse and decrease the walking fatigue.



+ IMPACT RESISTANCE

Vinylcomfort floors have the ability to bounce back from hard impacts, which makes them very robust and increases the life span of the flooring.

Realistic & Durable

The remarkable enduring beauty

Warm & Comfortable

Feel a warm and pleasant touch under your bare feet

Quiet & Healthy

Improve quality of life



Ultimate Luxury

with the comfort of cork

The sublime balance of Vinyl with Cork flooring

The sublime balance was achieved. This contemporary technology combines the luxury of vinyl designs with the unique comfort of cork, accomplished with an excellent reproduction of natural textures.

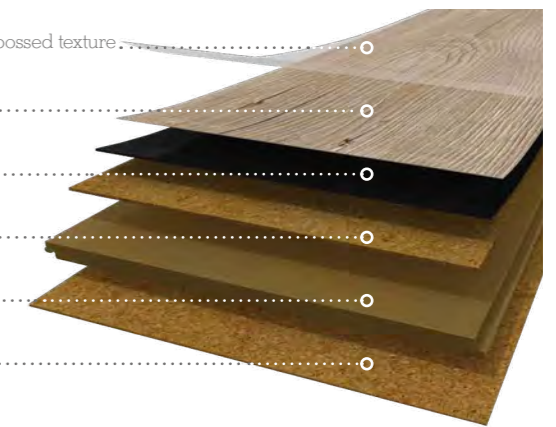
The realistic wood and stone visuals of this collection, with all the benefits of cork inside, are the perfect choice to create comfortable, warmth and peaceful atmospheres.

Floating solution

With the glueless Corkloc® installation system, simply put the planks together and securely click them into place. It is a very quick, safe and clean solution.

The stone visuals are available in a board format of 905 x 295mm (35 5/8 x 11 5/8"). All the wood visuals are available in the elegant plank of 1220 x 185mm (48 x 7 1/4").

- Protective wear layer** 0,2mm, 0,3mm or 0,55mm, with embossed texture. Easy maintenance & extra resistance
- High resolution printed film** Decorative visual
- Solid vinyl layer** 1,2mm Structural layer
- Agglomerated cork** 1,5mm Step sound reduction, warmth & comfort
- HDF - High Density Fiberboard with Corkloc®** 6mm Quick & easy installation
- Integrated cork underlay** 1,2mm Impact sound reduction & thermal reinforcement



0,2 mm wear layer

For residential areas

0,2mm Wear Layer

15 YEARS Home

5 YEARS Commercial

0,3 mm wear layer

For residential and light commercial areas

0,3mm Wear Layer

25 YEARS Home

10 YEARS Commercial

0.55mm wear layer

For heavy commercial traffic areas

0,55mm Wear Layer

25 YEARS Home

15 YEARS Commercial

Natural realistic look!



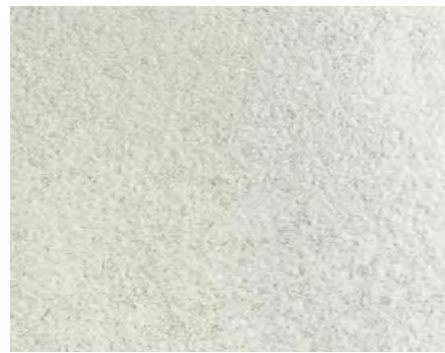
Synchronized perfection of wood grain and knots

Rich textures for an intense and natural realism

Specific surface textures were developed in order to offer a remarkable realism for every type of floor. Smooth, grained or brushed – inspired by the most traditional wood & stone working techniques – **Vinyl**comfort floor touches your desire with its luxurious look.

Authentic embossed texture for a natural look and feel

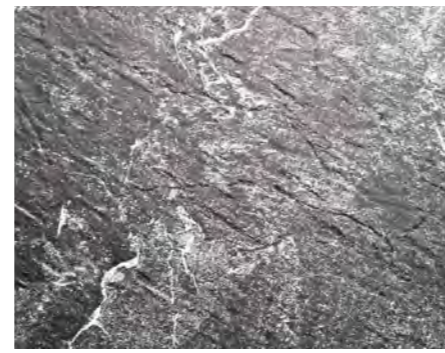
With the registered embossing revolutionary technology, Wicanders is able to perfectly synchronize impressive surface textures to each luxurious design intensifying the feeling of depth. The result is a high quality floor where the natural textures can hardly be told apart from real materials. Four amazing designs were created to suit all kind of styles.



Moonscape Stone
Delicate small rims resembling the moon surface.



Volcanic stone
A soft and sophisticated structure.



Sliced stone
The gross stone strong texture.



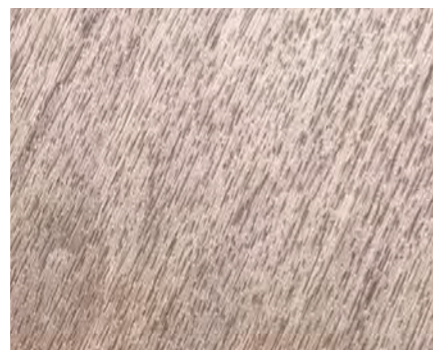
Century
A rustic pine with knots that inspires iconic ambiances with centuries past.



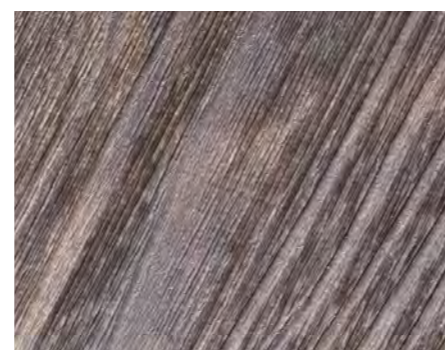
Arcadian
A washed weather-beaten alpine larch that give a rustic flare in any modern space.



Grained stone
A natural smooth and fine touch.



Fine pore wood
A plain appearance surface with a smooth touch.



Brushed wood
A strong wood texture with a brushed effect.



Castle
A brushed antic oak that will add unique and authentic rustic character to any space.



Sawn
A sawn white washed oak, ideal to add contrast to a modern interior design or to underline a rustic country style.

Light shades

Creating light and space

The light shades bright up and amplify spaces, providing a pure and serene atmosphere. Due to its extreme versatility it is the perfect choice for the base of modern decorations.



Light Beech
B0T0003 - 1220 x 185 x 10,5mm | Floating 0,3mm wear layer
B0T0002 - 1220 x 185 x 10,5mm | Floating 0,55mm wear layer



Wheat Pine
B0R3001 - 1220 x 185 x 10,5mm | Floating 0,55mm wear layer



Sand Oak



Linen Cherry
B0R0001 - 1220 x 185 x 10,5mm | Floating 0,55mm wear layer



Sand Oak
B0R1001 - 1220 x 185 x 10,5mm | Floating 0,55mm wear layer



Wheat Pine



Expressive contrasts

The expressive contrasts, are a perfect choice to create an unique and astonishing organic look, with unique effects and nuances, that will enrich interior atmospheres.



Frozen Oak
B0N9001 - 1220 x 185 x 10,5mm | Floating 0,3mm wear layer



Nordic Ash
B0V4001 - 1220 x 185 x 10,5mm | Floating 0,55mm wear layer

Modern Rustic

The Modern Rustic light visuals are perfect to create a casually elegant decor with a harmonious and welcoming interior.



White Oak
B0M8001 - 1220 x 185 x 10,5mm | Floating 0,3mm wear layer



Alaska Oak
B0Q0003 - 1220 x 185 x 10,5mm | Floating 0,3mm wear layer



Shell Oak
B0N4001 - 1220 x 185 x 10,5mm | Floating 0,2mm wear layer



Claw Silver Oak
B0V3001 - 1220 x 185 x 10,5mm | Floating 0,55mm wear layer



Limed Grey Oak
B0T7001 - 1220 x 185 x 10,5mm | Floating 0,55mm wear layer



Limed Grey Oak



Rustic Limed Grey Oak
B0U0001 - 1220 x 185 x 10,5mm | Floating 0,55mm wear layer

Natural shades

Create an ambiance of total relaxation

The natural look of classic and neutral shades opens the door to a timeless beauty. Genuinely classic or freely modern, you'll breathe peace and tranquility in an ambiance with natural wooden designs.



Amber Cherry
B0Q7003 - 1220 x 185 x 10,5mm | Floating 0,3mm wear layer



Blonde Oak
B0N1001 - 1220 x 185 x 10,5mm | Floating 0,2mm wear layer



Nature Oak
B0T5001 - 1220 x 185 x 10,5mm | Floating 0,55mm wear layer



Rustic looks are a versatile option, with their unique knots and creased texture. They can give a distinct touch to a minimalistic decoration, like a breath of fresh air, and they can also be used to emphasize the charm of a country home.



Chalk Oak
B0Q1003 - 1220 x 185 x 10,5mm | Floating 0,3mm wear layer



Provence Oak
B0Q3003 - 1220 x 185 x 10,5mm | Floating 0,3mm wear layer



Elegant Oak
B0R4001 - 1220 x 185 x 10,5mm | Floating 0,55mm wear layer



Provence Oak



Castle Raffia Oak

Synchronized perfection of wood grain and knots

With the registered embossing revolutionary technology, Wicanders is able to perfectly synchronize impressive surface textures to each luxurious design intensifying the feeling of depth.



Castle Toast Oak
B0P1001 - 1220 x 185 x 10,5mm | Floating 0,55mm wear layer



Castle Raffia Oak
B0P0001 - 1220 x 185 x 10,5mm | Floating 0,55mm wear layer



Arcadian Soya Pine
B0P4001 - 1220 x 185 x 10,5mm | Floating 0,55mm wear layer



Arcadian Rye Pine
B0P5001 - 1220 x 185 x 10,5mm | Floating 0,55mm wear layer

This sample image is cut from a larger piece. Decor and shade may vary slightly.

Brown shades

Radiate noble elegance and charm

The warm and attractive brown shades integrate your space giving an intimate feeling to it. They are the ideal selection for stylish perspectives in modern decors.



Century Fawn Pine
B0P7001 - 1220 x 185 x 10,5mm | Floating 0,55mm wear layer



Century Morocco Pine
B0P6001 - 1220 x 185 x 10,5mm | Floating 0,55mm wear layer



Sawn Twine Oak



Century Morocco Pine



Sawn Bisque Oak
B0P3001 - 1220 x 185 x 10,5mm | Floating 0,55mm wear layer



Sawn Twine Oak
B0P2001 - 1220 x 185 x 10,5mm | Floating 0,55mm wear layer



Croft Oak
BOV9001 - 1220 x 185 x 10,5mm | Floating 0,3mm wear layer



Bark Oak
BOV8001 - 1220 x 185 x 10,5mm | Floating 0,3mm wear layer



Tobacco Pine
BOR6001 - 1220 x 185 x 10,5mm | Floating 0,55mm wear layer



Smoked Rustic Oak
BOU4001 - 1220 x 185 x 10,5mm | Floating 0,55mm wear layer

Reddish shades

A warm and exotic touch

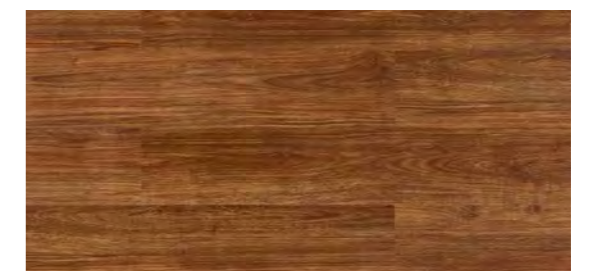
The reddish shades are the perfect choice to create a warm and comfortable atmosphere with a touch of vitality and life.



European Oak



European Oak
B0Q2004 - 1220 x 185 x 10,5mm | Floating 0,3mm wear layer



Light Sucupira
B0O9001 - 1220 x 185 x 10,5mm | Floating 0,3mm wear layer

Intense Grey shades

The foundation of a strong character

A grey gradient floor gives a strong statement to your space whatever style of living and furnishing you may choose. Among the dark grey floors you'll emphasize your avant-garde taste, creating individual and expressive vibrations.



Storm Oak
B0N3001 - 1220 x 185 x 10,5mm | Floating 0,2mm wear layer



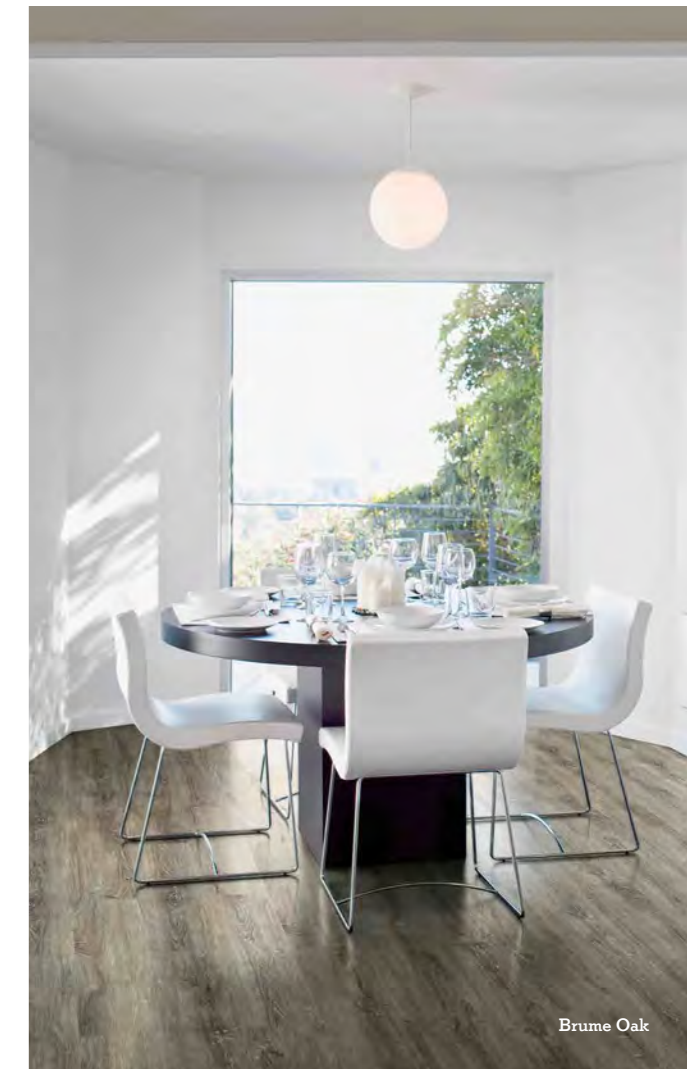
Brume Oak
B0N8001 - 1220 x 185 x 10,5mm | Floating 0,3mm wear layer



Platinum Oak
B0M6001 - 1220 x 185 x 10,5mm | Floating 0,3mm wear layer



Cinder Oak
B0R7001 - 1220 x 185 x 10,5mm | Floating 0,55mm wear layer

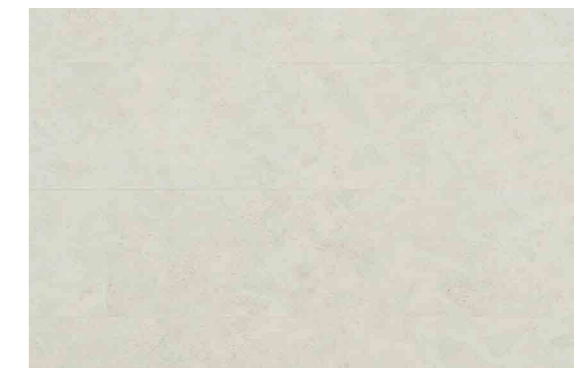


Brume Oak

Stones essence

An authentic experience

Stone patterns have the essence of a Mediterranean look and a fine grained touch. The most charming details of a stone, complemented with the unique advantages of cork, invite you to enjoy the stunning effect of a comfortable laid stone floor.



White Ceramic
B0P8001 - 905 x 295 x 10,5mm | Floating 0,3mm wear layer

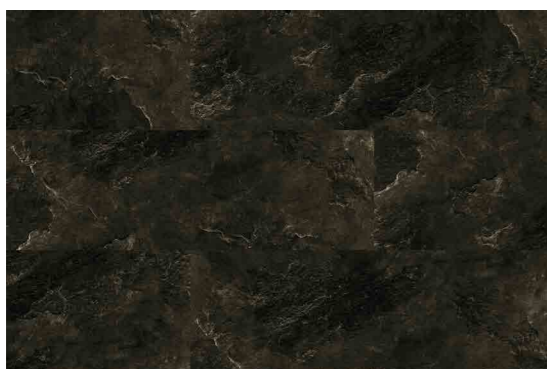


Beige Ceramic
B0P9001 - 905 x 295 x 10,5mm | Floating 0,3mm wear layer

With the more **strong and sophisticated** stone visuals, modern decors get a unique character, inspired in nature organic shapes, which will turn your floor into a décor statement.



Volcanic Ash
B0C3001 - 905 x 295 x 10,5mm | Floating 0,3mm wear layer



Coal Slate
B0C1001 - 905 x 295 x 10,5mm | Floating 0,3mm wear layer



Get the best results with **Wicanders' accessories!**

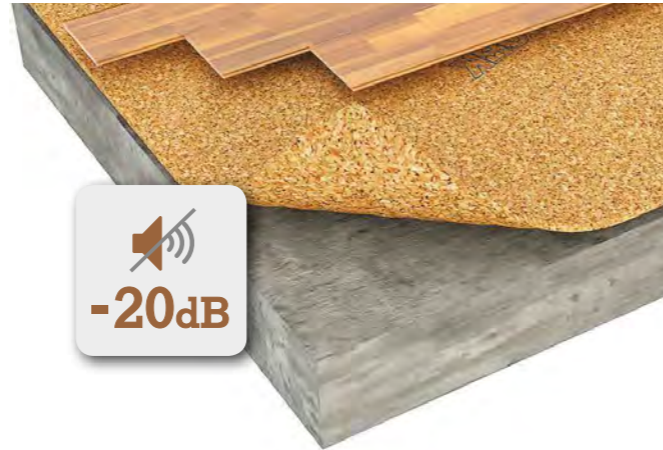
Underlays

Increased comfort and insulation

To reinforce the already amazing insulation properties of cork flooring, Wicanders provides Acousticork, a cork underlay which lets you turn your home into an even cosier space.

Acousticork increases the walking comfort, and also reduces the noise and the heat dispersion. Overall, it makes rooms cosier and more peaceful, which are essential in making any house feel homey.

It is available in two options: agglomerated cork and agglomerated cork with a moisture barrier.



- **High durability and long term resilience**
- **Increases floor thermal insulation**
- **Natural and sustainable product**
- **Easy to handle and install**

Skirtings

The perfect match to make a pleasant interior

In order to help to create a more classy and harmonious interior, Wicanders provides skirting profiles to complement your floor. Create your ideal transition between the walls and the floor, whether by an exact match or contrasting colors. There are skirting profiles available for the complete range of **Vinylcomfort** products. Contact your supplier for information on the available skirting references.



Maintenance

Optimal care for an everlasting beauty

To keep your floor spotless, Wicanders has available a set of auxiliary products. Each of these has a specific purpose and is designed to make the caring of your floor as easy as possible.

REGULAR MAINTENANCE



Wicanders Soft Cleaner

This mild detergent is appropriate for weekly or even daily cleaning. It can be used to remove dirt, stopping it from infiltrating in the joints and in the embossing of the product.



Wicanders Spray Cleaner

Designed for regular cleaning, this mild detergent has the advantage of being a spray, which makes it a quick and easy solution to apply directly on the floor. It is very effective in cleaning dirt or grease stains.

PERIODIC MAINTENANCE



Wicanders Power Polish

This product is used for periodic maintenance, giving added protection to the floor due to its strong cleaning power. It helps to keep the floor's appearance intact over the years and is especially important to use in high traffic areas.



Wicanders Power Strip

The Power Strip is used to clean persistent dirt and to remove old maintenance products, since the accumulation of too many coats of these products can make the floor have an unpleasant look.



Why is Wicanders cork flooring the perfect choice?

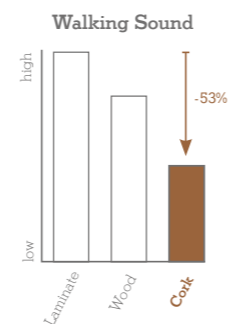


+ SILENCE

Thanks to the acoustic insulation provided by cork, Wicanders floors can easily cut noise within and between rooms.

Comparing the walking sound between cork and laminate floors, tests confirm that cork floors have an exceptional result reducing the sound up to 53%.

Study run by Entwicklungsund Prüflabor Holztechnologie gmbH (EPH) in Germany according to IHD-W 431.

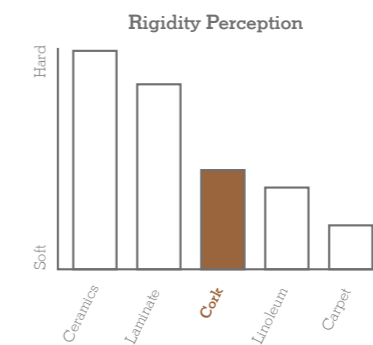


+ BODY WELLNESS

Wicanders floors are stable enough to avoid the leg and back stress that is generated by walking on too hard or too soft floors.

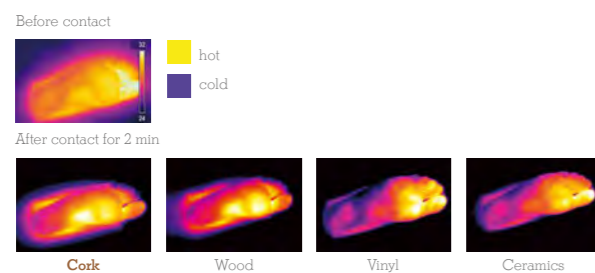
Softer than laminate and harder than carpets, Wicanders cork floors are the perfect mix to reduce heel strike impacts and related body tensions, but stable enough to help the foot impulse and provide the needed stability to reduce effort on walking and decrease body fatigue.

Study run by IBV biomechanical institute in Valencia, Spain.



+ NATURAL THERMAL INSULATION

Infrared foot temperature



The natural thermal properties of cork make Wicanders floors very energy efficient, providing an optimal temperature all year round.

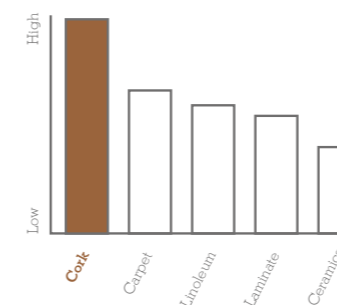
When testing foot temperature in contact with four different materials, cork floors stand out as being the best solution to retain heat.

Better than wood and by far better than ceramic when it comes to avoid energy dispersion.

Study run by IBV biomechanical institute in Valencia, Spain.

+ IMPACT RESISTANCE

Shock Absorbing



Due to cork's resilience and elasticity, Wicanders floors have the ability to bounce back from hard impacts.

Tests show that Wicanders cork floors have the highest shock absorbing performance.

When an object accidentally falls in a cork or in a laminate floor, different results come through.

Study run by IBV biomechanical institute in Valencia, Spain.

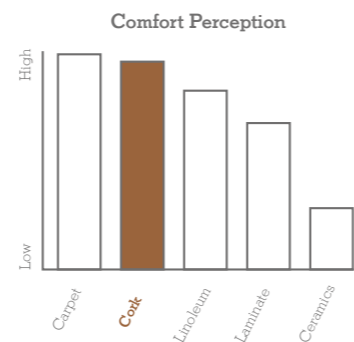
+ WALKING COMFORT

Cork floors are very comfortable to walk on, due to cork's natural and inherent flexibility, providing a unique comfort in movement.

When testing the level of comfort perception of people walking for 45 minutes over five different materials, results show that Wicanders cork floors have a great outcome.

With high comfort perception, it outperforms linoleum, laminate and ceramic floors.

Study run by IBV biomechanical institute in Valencia, Spain.



Fast & Easy Installation

Floating floors with CorkLoc® system are easier and faster to install.



Low & Easy Maintenance

The special surface finishing of Vinylcomfort floors make them easier to clean and maintain.



Sustainable

Cork comes from the bark of the cork oak tree. It is removed from the trunk by hand without ever damaging the tree. Every year a new bark grows making it a renewable and sustainable resource.



Think green choose Wicanders®

Wicanders® is a truly sustainable brand! Produced by Amorim, it represents a unique balance between the creation of wealth and the protection of the environment. The starting point is a raw material that is extracted cyclically from the cork oak trees without ever damaging them. This raw material is then transformed into high value-added products while promoting the economic and social sustainability of areas at risk of desertification.

Several eco-efficiency studies, based on a comparative analysis with several other types of flooring, illustrate the excellent environmental performance of Wicanders® products and its manufacturing process. Besides the smaller amounts of energy and raw materials required for the manufacturing process, these products actively contribute to reducing global warming, not only through their low emissions, but also due to cork's natural property of retaining CO₂.

It is estimated that the Portuguese cork oak forest – montado – is responsible for retaining 5% of the country's annual CO₂ emission, representing 4.8 million tons per year.



The importance of Cork Oak

The Cork Oak (Quercus Suber L.) is a tree belonging to the Oak family from which Cork is extracted. Its value is based not only on the products extracted from the tree, but on all of the agricultural, forest, pastoral and hunting activities that revolve around the cultivation of the Cork Oak.

Regular extraction of the Cork (a process called stripping) is a fundamental contribution for environmental, economic and social sustainability in the rural areas of the Mediterranean region where the Cork Oak may be found.

The Cork tree is a slow growing tree, which may live for 200 years, which allows it, on average, to be stripped 16 times during its lifetime. The first extraction of cork from the Cork Oak tree occurs only 25 years after planting, following which it is harvested in 9 year cycles, without ever damaging the tree in any way. This method allows the cork oak forest to fulfill its role of fixing CO₂, thus actively contributing to reduce global warming.

The Cork forest in Portugal (700.000 hectares), known as "Montado", is a typical Iberian Landscape which is key in supporting a natural bio-diversity, including some of the most endangered species in the world: Iberian Lynxes, Imperial Eagles, Black Storks, Wolves and Wild Bears.



A GIFT FROM NATURE



Greenguard Certification helps the identification of interior products and materials that have low chemical emissions, improving the quality of the air in which the products are used. It promotes global sustainability, environmental health, and safety.



As of January 2012, France has adopted regulations that limit total VOC emissions of building products. Manufacturers, selling their products in France must obtain a classification ranging from A+ (very low emissions) to C (high emissions). The declared goal is to improve indoor air quality in private/ commercial buildings.



An Environmental Product Declaration is a verified document that reports environmental data of products based on life cycle assessment and other relevant information in accordance with the international standard ISO 14025.

Product Selector

		Vinylcomfort Floating			
		0,2mm Wear Layer	0,3mm Wear Layer		0,55mm Wear Layer
Class of Use (ISO 10874)		31	32	32	33
Thickness (mm)		10,5	10,5	10,5	10,5
Dimension (mm)		1220 x 185	905 x 295	1220 x 185	1220 x 185
Embossing		Yes	Yes	Yes	Yes
Beveling		No	No	No	4 sides
Wood	Textures				
Linen Cherry	Fine pore wood				BOR001
Sand Oak	Brushed wood				BOR1001
Light Beech	Fine pore wood		BOT0003		BOT0002
Wheat Pine	Brushed wood				BOR3001
Frozen Oak	Brushed wood		BON9001		
Nordic Ash	Fine pore wood				BOV4001
White Oak	Brushed wood		BOM8001		
Alaska Oak	Brushed wood		BOQ0003		
Shell Oak	Brushed wood	BON4001			
Claw Silver Oak	Brushed wood				BOV3001
Limed Grey Oak	Fine pore wood				BOT7001
Rustic Limed Gray Oak	Brushed wood				BOU0001
Castle Toast Oak	Authentic embossed texture				BOP1001
Castle Raffia Oak	Authentic embossed texture				BOP0001
Arcadian Soya Pine	Authentic embossed texture				BOP4001
Arcadian Rye Pine	Authentic embossed texture				BOP5001
Sawn Twine Oak	Authentic embossed texture				BOP2001
Sawn Bisque Oak	Authentic embossed texture				BOP3001
Amber Cherry	Fine pore wood		BOQ7003		
Chalk Oak	Brushed wood		BOQ1003		
Provence Oak	Brushed wood		BOQ3003		
Elegant Oak	Fine pore wood				BOR4001
Nature Oak	Fine pore wood				BOT5001
Blonde Oak	Brushed wood	BON1001			
European Oak	Brushed wood		BOQ2004		
Light Sucupira	Fine pore wood		BOQ9001		
Croft Oak	Brushed wood		BOV9001		
Bark Oak	Brushed wood		BOV8001		
Tobacco Pine	Brushed wood				BOR6001
Smoked Rustic Oak	Brushed wood				BOU4001
Century Fawn Pine	Authentic embossed texture				BOP7001
Century Morocco Pine	Authentic embossed texture				BOP6001
Brume Oak	Brushed wood		BON8001		
Storm Oak	Brushed wood	BON3001			
Platinum Oak	Fine pore wood		BOM6001		
Cinder Oak	Brushed wood				BOR7001
Stone					
White Ceramic	Moonscape stone		BOP8001		
Beige Ceramic	Moonscape stone		BOP9001		
Volcanic Ash	Grained stone		BOQ3001		
Coal Slate	Sliced stone		BOQ1001		

Technical Data Sheet

			Vinylcomfort Floating		
			0,55mm Wear Layer 1220 x 185 x 10,5mm 48 x 7 1/4 x 3/8'	0,3mm Wear Layer 1220 x 185 x 10,5mm 48 x 7 1/4 x 3/8' 905 x 295 x 10,5mm 35 5/8 x 11 5/8 x 3/8'	0,2mm Wear Layer 1220 x 185 x 10,5mm 48 x 7 1/4 x 3/8'
Level of use Domestic	ISO 10874	Class	23	23	23
Level of use Commercial	ISO 10874	Class	33	32	31
	Standard-Test Method	Unit	Specification EN 14085 + EN 649	Specification EN 14085 + EN 649	Specification EN 14085 + ISO 10582
General properties					
Dimensions	ISO 24342	mm	± 0,10% up to width: max. 0,5 mm length: max. 2,0 mm	± 0,10% up to width: max. 0,5 mm length: max. 2,0 mm	± 0,10 up to max. 0,5 mm max. 2,0 mm
Overall thickness	ISO 24346	mm	± 0,25	± 0,25	± 0,25
Straightness measured at the surface layer	ISO 24342	mm	≤ 0,30	≤ 0,30	≤ 0,30
Squareness	ISO 24342	mm	≤ 0,50	≤ 0,50	≤ 0,50
Apparent density	EN 672	Kg/m ³	Nominal value (960) ± 50	Nominal value (900) ± 50	Nominal (930) ± 50
Mass per unit area	ISO 23997	g/m ²	Nominal value (10150) - 10 % + 13%	Nominal value (9800) - 10 % + 13%	Nominal +13% / -10%
Dimensional stability (humidity)	EN 669 (Annex C)	mm	≤ 5	≤ 5	≤ 5
Dimensional stability (heat)	EN 14085 Annex C / EN 669	%	-	-	-
Openings between panels	EN 14085 (Annex B)	mm	≤ 0,20	≤ 0,20	≤ 0,20
Height difference between panels	EN 14085 (Annex B)	mm	≤ 0,20	≤ 0,20	≤ 0,20
Flatness of the panel (Length - Concave / Convex)	EN 14085 (Annex A)	%	≤ 0,50 / ≤ 1,0	≤ 0,50 / ≤ 1,0	≤ 0,50 / ≤ 1,0
Flatness of the panel (Width - Concave / Convex)	EN 14085 (Annex A)	%	≤ 0,10 / ≤ 0,15	≤ 0,10 / ≤ 0,15	≤ 0,10 / ≤ 0,15
Residual indentation	ISO 24343-1	mm	≤ 0,15	≤ 0,15	≤ 0,15
Colour fastness	ISO 105-BO2	Blue wool scale	≥ 6	≥ 6	≥ 6
Classification properties - EN 655 + EN 649 + EN 14085					
Wearing Group	EN 660-1	Thickness loss (Δ lmm)	Wear group T	Wear group T	-
Overall thickness (Vinyl + Cork layer)	ISO 24346	mm	≥ 3,0	≥ 3,0	-
Thickness of wear layer (Wear Group T)	ISO 24340	mm	≥ 0,55	≥ 0,3	0,2
Castor chair	EN 425	Visual effect - after 25 000 cycles	No disturbance to the surface other than slight change in appearance and no delamination shall occur	No disturbance to the surface other than slight change in appearance and no delamination shall occur	No disturbance to the surface other than slight change in appearance and no delamination shall occur
Simulated movement of a furniture leg	EN 424	Visual effect	No damage shall be visible after testing with a type 2 foot	No damage shall be visible after testing with a type 2 foot	No damage shall be visible after testing with a type 2 foot
Safety properties - EN 14041					
Fire resistance	EN 13501-1	Class	Bfl s1	Bfl s1	Bfl s1
Slip Classification	EN 13893	Class	DS	DS	DS
Formaldehyde emission	DIN EN 717-1	Class	E1	E1	E1
Electrical behaviour	EN 1815	kV	Antistatic	Antistatic	Antistatic
Content pentachlorophenol (PCP)	CEN/TR 14823 (hd-W 409)	mg/Kg	PCP free	PCP free	-
	EN 14041 Annex B	%	-	-	Undetectable
Additional properties					
Stains Resistance	ISO 26987 (a)	Grade	Grade 0 (b) *	Grade 0 (b)	Grade 0 (b)
Thermal resistance	EN 12667	(m ² K)/W	0,093	0,104	R <0,112
Impact sound reduction	ISO 140-8	dB (Δ Lw)	16	16	16
Step sound/ Step sound reduction	NF S 31 - 074	L n.e.w (dB)/ΔEρw (dB)	81	81	81
Walking noise	IHD - W431	dB (A)	Reduction improvement 11,4 dB(A) Difference of loudness 45,4%	Reduction improvement 11,4 dB(A) Difference of loudness 45,4%	Reduction improvement 11,4 dB (A) Difference of loudness 45,4%

(a) The following products were tested: Desinfectant, C2H5OH, NH4OH, Citric acid, iodine, petroleum, spirit
 (b) Grade 0 - Unchanged / Grade 1 - Very little change / Grade 2 - Little change / Grade 3 - Change / Grade 4 - Strong Change
 * Except Iodine - Grade 2 - Little change



Produced by Amorim, the worldwide market leader in cork products, Wicanders matches nature's most pure values with avant-garde technologies to provide high quality, ecologic and stylish flooring. Wicanders has an unsurpassed reputation for developing high

standard and unique comfortable flooring solutions, following the latest decoration tendencies and targeting both residential and commercial market segments.

Wicanders is truly a sustainable brand!

www.wicanders.com



DE	Amorim Deutschland GmbH (+49) 4221 5 93-01	germany.ar.de@amorim.com
BE NE LUX	Amorim Benelux B.V. (+31) 166 604 111	info.ar.nl@amorim.com
AT	Amorim Deutschland GmbH (+43) 1 54 51 65 10	austria.ar.de@amorim.com
CH	Amorim Flooring Switzerland AG (+41) 41 726 20 20	info@amorim.ch
PT	Amorim Revestimentos, S.A. (+351) 227 475 600	geral.ar@amorim.com
ES	Amorim Revestimentos, S.A. (+34) 902 307 407	info.ar.es@amorim.com
FR	Amorim Revestimentos, S.A. (+33) 800 914 848	info.ar.fr@amorim.com
DK	Timberman Denmark A/S (+45) 995 252 52	timberman@timberman.dk
PL	Dom Korkowy, Sp. z o.o. (+48) 126 379 639	krakow@domkorkowy.pl
US	Amorim Flooring North America (+1) 410 553 60 62	info.ar.us@amorim.com
RU	Amorim Flooring Rus, OOO (+7) 495 280 7860	info.ar.ru@amorim.com



HeadQuarters
Amorim Revestimentos S.A
(+351) 227 475 600
geral.ar@amorim.com

